

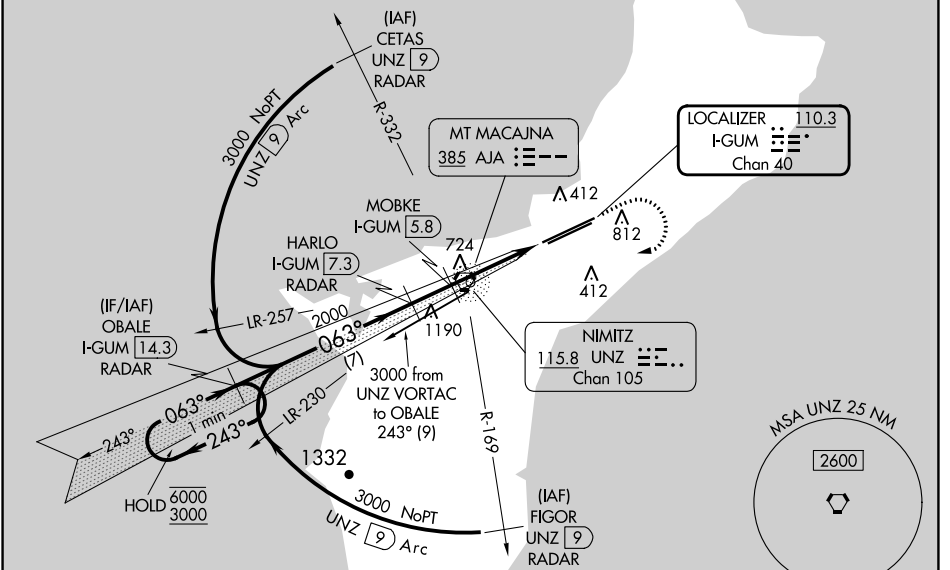
LOC/DME I-GUM 110.3 Chan 40	APP CRS 063°	Rwy ldg 11014 TDZE 256 Apt Elev 305
---	------------------------	--

ILS or LOC RWY 6L

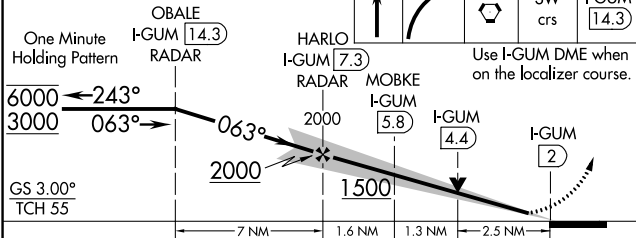
GUAM INTL (GUM)(PGUM)

DME or RADAR required.	MALSR 	MISSED APPROACH: Climb to 2100 then climbing right turn to 3000 direct UNZ VORTAC then on I-GUM localizer SW course to OBALE/I-GUM 14.3 DME/RADAR and hold.
▽ Circling NA southeast of Rwy 6R-24L. For inop ALS, increase S-ILS 6L all Cats visibility to 1 SM; MOBKE fix minimums (DME required): For inop ALS, increase S-LOC 6L Cats C and D visibility to 2½ SM. Inop table does not apply to S-LOC 6L Cats C and D.	⚠	

ATIS 119.0	GUAM CERAP 119.8 269.0	AGANA TOWER 118.1 340.2	GND CON 121.9 336.4	CLNC DEL 121.9
----------------------	----------------------------------	-----------------------------------	-------------------------------	--------------------------

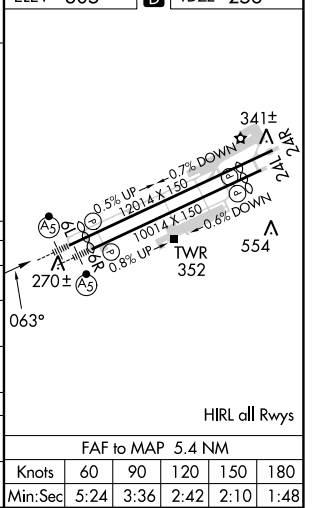


VGSI and ILS glidepath not coincident (VGSI Angle 3.00/TCH 73).



CATEGORY	A	B	C	D
S-ILS 6L	590-½ 334 (300-½)			
S-LOC 6L	1500-¾ 1244 (1200-¾)	1500-1 1244 (1200-1)	1500-3	1244 (1200-3)
C CIRCLING	1500-1¼ 1195 (1200-1¼)	1500-1½	1500-3	NA
MOBKE FIX MINIMUMS (DME REQUIRED)				
S-LOC 6L	1100-¾ 844 (800-¾)	1100-2 844 (800-2)		
C CIRCLING	1100-1 795 (800-1)	1100-1¼ 795 (800-1¼)	1100-2½ 795 (800-2½)	NA

ELEV 305	D TDZE 256
----------	-------------------



HIRL all Rwys					
FAF to MAP 5.4 NM					
Knots	60	90	120	150	180
Min:Sec	5:24	3:36	2:42	2:10	1:48