

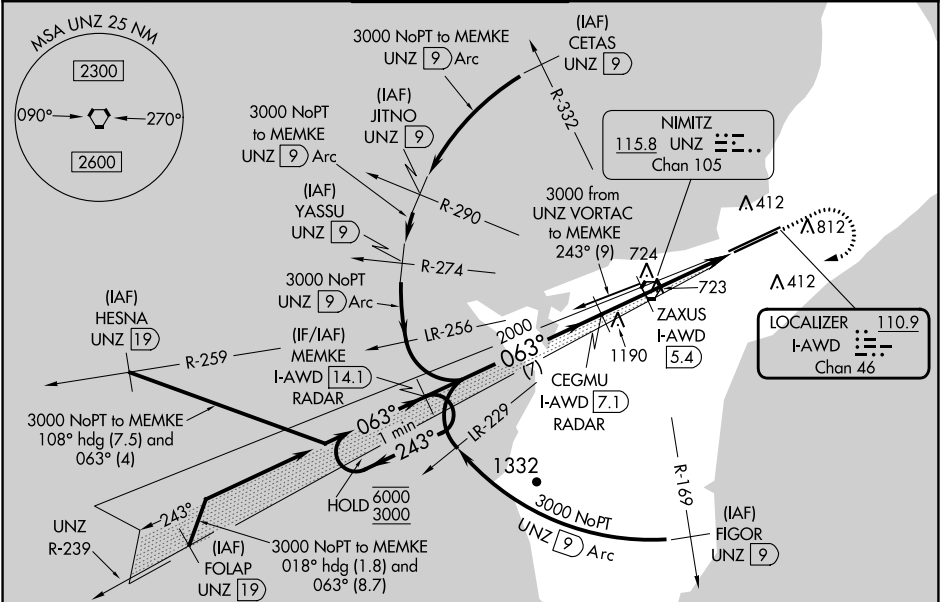
LOC/DME I-AWD <b>110.9</b> Chan <b>46</b>	APP CRS <b>063°</b>	Rwy Idg <b>10014</b> TDZE <b>258</b> Apt Elev <b>305</b>
---	------------------------	--

# ILS or LOC RWY 6R

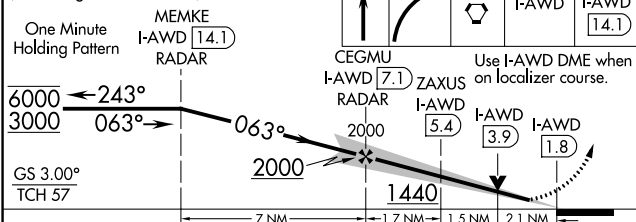
GUAM INTL (GUM)(PGUM)

DME or RADAR required.	MALSR 	MISSED APPROACH: Climb to 2100 then climbing right turn to 3000 direct UNZ VORTAC and on I-AWD to MEMKE/I-AWD 14.1 DME/RADAR and hold.
<p><b>⚠</b> Circling NA southeast of Rwy 6R-24L. Rwy 6R helicopter visibility reduction below 3/4 SM NA. Inop table does apply to S-LOC 6R Cat C and D. ZAXUS fix minimums (DME required): For inop ALS, increase S-LOC 6R Cat A and B visibility to 1 SM and Cats C and D to 2 SM.</p>		

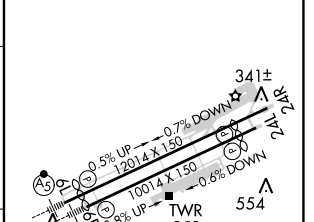
ATIS <b>119.0</b>	GUAM CERAP <b>119.8 269.0</b>	AGANA TOWER <b>118.1 340.2</b>	GND CON <b>121.9 336.4</b>	CLNC DEL <b>121.9</b>
----------------------	----------------------------------	-----------------------------------	-------------------------------	--------------------------



VGSI and ILS glidepath not coincident (VGSI Angle 3.00/TCH 76).



ELEV 305	<b>D</b> TDZE 258
----------	-------------------



CATEGORY	A	B	C	D
S-ILS 6R	603-3/4 345 (300-3/4)			
S-LOC 6R	1440-3/4 1182 (1200-3/4)	1440-1 1182 (1200-1)	1440-3 1182 (1200-3)	1182 (1200-3)
<b>C</b> CIRCLING	1440-1 1/4 1135 (1200-1 1/4)	1440-1 1/2 1135 (1200-1 1/2)	1440-3 1135 (1200-3)	NA
ZAXUS FIX MINIMUMS (DME REQUIRED)				
S-LOC 6R	980-3/4 722 (700-3/4)	980-1 5/8 722 (700-1 5/8)	980-2 675 (700-2)	NA
<b>C</b> CIRCLING	980-1 675 (700-1)	980-2 675 (700-2)	980-2 675 (700-2)	NA

HIRL all Rwys					
FAF to MAP 5.3 NM					
Knots	60	90	120	150	180
Min:Sec	5:18	3:32	2:39	2:07	1:46

PAC, 26 DEC 2024 to 20 FEB 2025

PAC, 26 DEC 2024 to 20 FEB 2025