

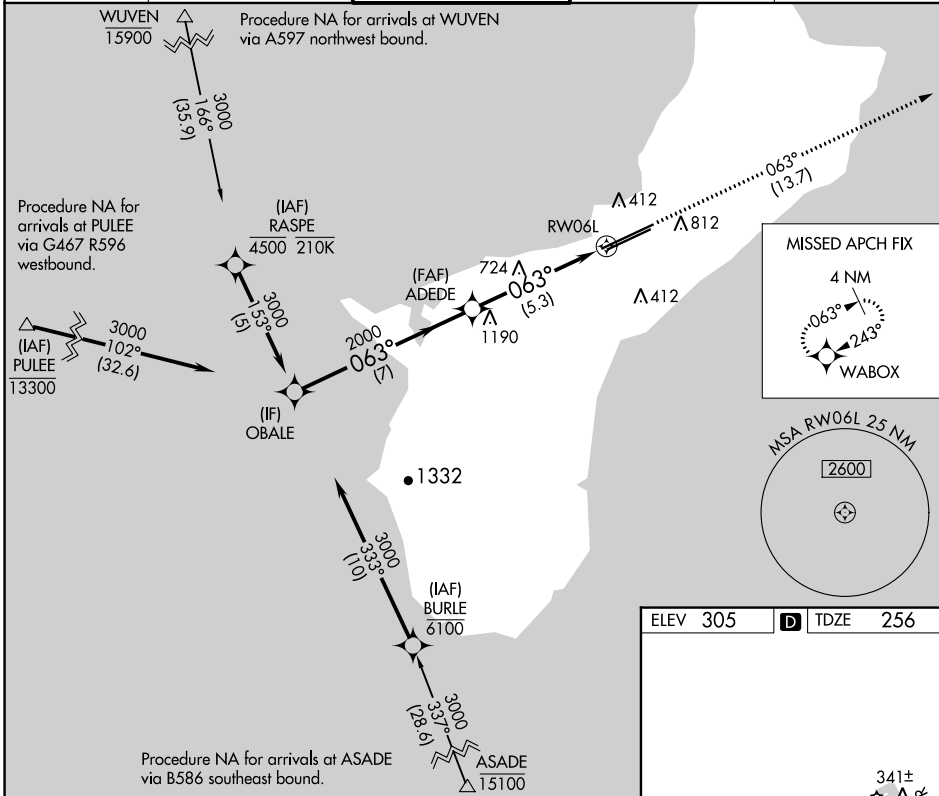
| | | |
|-------------|----------|--------------|
| APP CRS | Rwy Idg | 11014 |
| 063° | TDZE | 256 |
| | Apt Elev | 305 |

RNAV (RNP) Z RWY 6L

GUAM INTL (GUM)(PGUM)

| | | | |
|---|--|--------|--|
| RNP AR APCH - GPS. | | MALS R | MISSED APPROACH: Climb to 3000 via track 063° to WABOX and hold. |
| <p>▼ For uncompensated Baro-VNAV systems, procedure NA below 19°C or above 48°C. For inop ALS, increase RNP *0.30 all Cats visibility to ¾ SM and RNP 0.30 all Cats visibility to 1½ SM.</p> <p>*Missed approach requires a minimum climb of 276 feet per NM to 1400.</p> | | | |

| | | | | |
|--------------|--------------------|--------------------|--------------------|--------------|
| ATIS | GUAM CERAP | AGANA TOWER | GND CON | CLNC DEL |
| 119.0 | 119.8 269.0 | 118.1 340.2 | 121.9 336.4 | 121.9 |

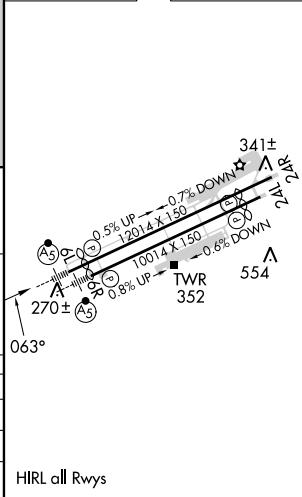


PAC, 26 DEC 2024 to 20 FEB 2025

PAC, 26 DEC 2024 to 20 FEB 2025

| | |
|----------|-------------------|
| ELEV 305 | D TDZE 256 |
|----------|-------------------|

| | | | | |
|-------------------|-------|---|-------------|-------|
| Procedure Turn NA | OBALE | VGSI and RNAV glidepath not coincident (VGSI Angle 3.00/TCH 73) | 3000 | WABOX |
| | 3000 | | ↑ tr 063° | |
| GP 3.00° TCH 50 | | ADEDE | 2000 | |
| | 063° | | 2000 | |
| | 7 NM | 5.3 NM | | |
| CATEGORY | A | B | C | D |
| RNP 0.30* DA | | 514-½ | 258 (300-½) | |
| RNP 0.30 DA | | 656-⅝ | 400 (400-⅝) | |



AUTHORIZATION REQUIRED

HIRL all Rwys