

HI-ILS Y or LOC/DME Y RWY 06L

LOC I-AND 109.3	APCH CRS 064°	Rwy Idg 10,528 TDZE 539 Arprt Elev 617
---------------------------	-------------------------	---

AL-2147 [USAF]

ANDERSEN AFB (PGUA)

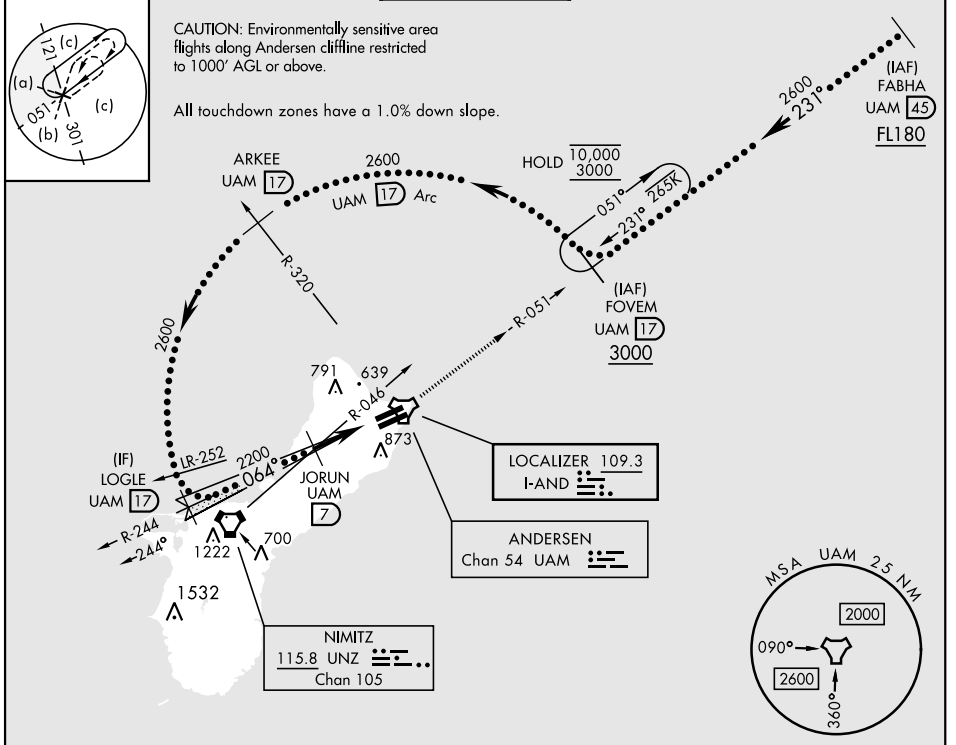
ATC RADAR monitoring required.

▼ * When ALS Inop, increase CAT AB RVR to 55, vis to 1 mile; CAT CDE vis to 1 1/8 miles.
** Circling not authorized NW of Rwy 06L-24R.

SALS **(A2)**

MISSED APPROACH: Climb to 3000, intercept UAM R-051 to FOVEM and hold.

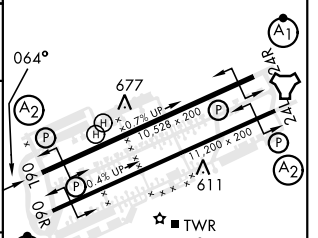
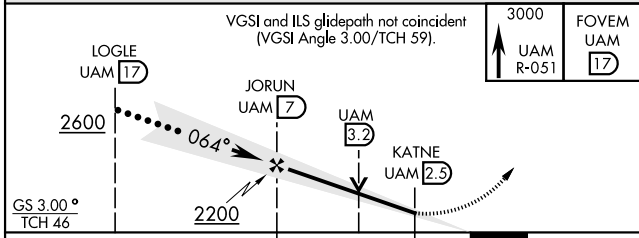
ATIS 118.175 254.325	GUAM APP CON 119.8 269.0	TOWER 126.2 233.7	GND CON 121.7 275.8	CLNC DEL 126.725 256.7
--------------------------------	------------------------------------	-----------------------------	-------------------------------	----------------------------------



PAC, 26 DEC 2024 to 20 FEB 2025

PAC, 26 DEC 2024 to 20 FEB 2025

EMERG SAFE ALT 100 NM 2900	ELEV 617	TDZE 539
----------------------------	-----------------	-----------------



CATEGORY	A	B	C	D	E
S-ILS 06L	739/40		200	(200-3/4)	
S-LOC 06L*	1020/40	481 (500-3/4)	1020/60	481 (500-1 1/8)	
C CIRCLING**	1060-1 443 (500-1)	1080-1 463 (500-1)	1240-1 3/4 623 (700-1 3/4)	1240-2 623 (700-2)	1240-2 1/4 623 (700-2 1/4)

HIRL all rwys

HI-ILS Y or LOC/DME Y RWY 06L