

# ILS Z or LOC/DME Z RWY 06R

LOC I-UAM <b>110.1</b>	APCH CRS <b>064°</b>	Rwy Idg <b>11,200</b> TDZE <b>557</b> Arprt Elev <b>617</b>
---------------------------	-------------------------	---

AL-2147 [USAF]

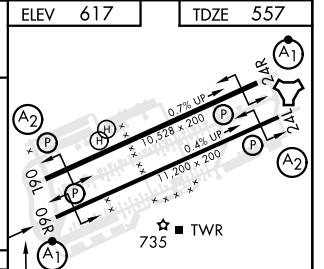
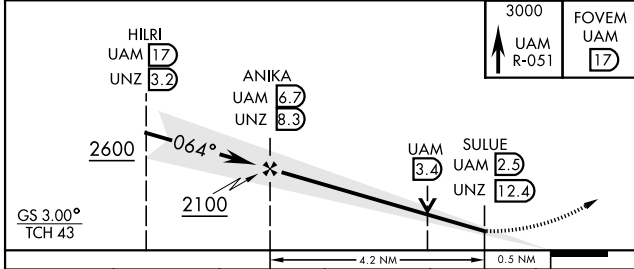
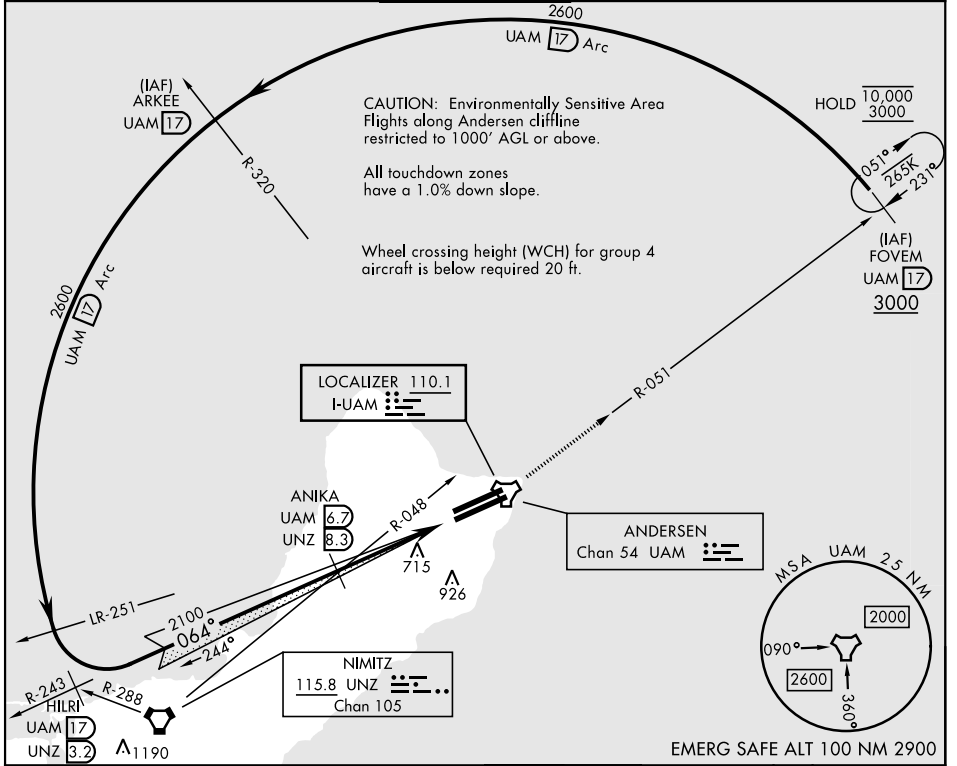
ANDERSEN AFB (PGUA)

▼ \* When ALS inop, increase RVR to 40, vis to ¾ mile.  
 \*\* When ALS inop, increase CAT AB RVR to 55, vis to 1 mile, CAT CDE vis to 1¾ miles.  
 \*\*\* Circling not authorized NW of Rwy 06L-24R.



MISSED APPROACH: Climb to 3000, intercept UAM R-051 to FOVM and hold.

ATIS <b>118.175 254.325</b>	GUAM APP CON <b>119.8 269.0</b>	TOWER <b>126.2 233.7</b>	GND CON <b>121.7 275.8</b>	CLNC DEL <b>126.725 256.7</b>
--------------------------------	------------------------------------	-----------------------------	-------------------------------	----------------------------------



CATEGORY	A	B	C	D	E
S-ILS 06R*	757/24		200	(200-½)	
S-LOC 06R**	1040/24 483 (500-½)		1040/50 483 (500-1)		
CIRCLING***	1060-1 443 (500-1)	1080-1 463 (500-1)	1240-1¾ 623 (700-1¾)	1240-2 623 (700-2)	1240-2¼ 623 (700-2¼)

ELEV	617	TDZE	557		
FAF to MAP 4.2 NM					
Knots	60	90	120	150	180
Min:Sec	4:12	2:48	2:06	1:41	1:24

# ILS Z or LOC/DME Z RWY 06R

PAC, 26 DEC 2024 to 20 FEB 2025

PAC, 26 DEC 2024 to 20 FEB 2025