

YIGO, GUAM I, GUAM

# RNAV (GPS) RWY 24L

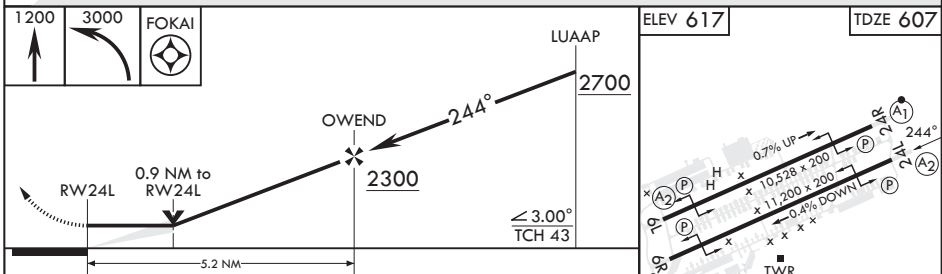
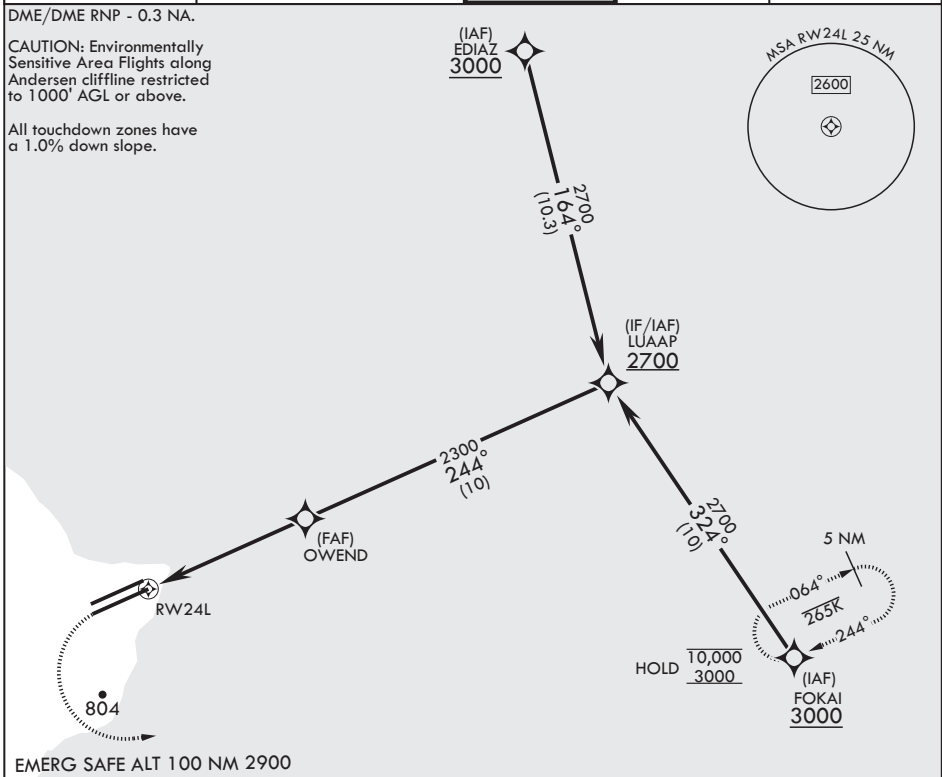
APCH CRS	Rwy Idg	11,200
244°	TDZE	607
	Arprt Elev	617

- (USAF)

ANDERSEN AFB (PGUA)

RNP APCH	SALS	MISSED APPROACH: Climb to 1200, then climbing left turn to 3000 direct FOKAI and hold.
<p>▼ * When ALS inop, increase CAT AB RVR to 55, vis to 1 mile; CAT CDE RVR to 50, vis to 1 mile. ** Circling not authorized NW of Rwy 06L-24R.</p>		(A2)

ATIS	GUAM APP CON/DEP CON	TOWER	GND CON	CLNC DEL
118.175 254.325	119.8 269.0	126.2 233.7	121.7 275.8	126.725 256.7



CATEGORY	A	B	C	D	E
LNAV MDA*	940/40	333 (400-¾)	940/45	333	(400-¾)
CIRCLING**	1060-1 443 (500-1)	1080-1 463 (500-1)	1240-1¾ 623 (700-1¾)	1240-2 623 (700-2)	1240-2¼ 623 (700-2¼)

ELEV 617 | TDZE 607

HIRL all Rwys

YIGO, GUAM I, GUAM

13°35'N - 144°56'E

ANDERSEN AFB (PGUA)

Amdt 1 17JUN21  
TERPS

# RNAV (GPS) RWY 24L

PAC, 26 DEC 2024 to 20 FEB 2025

PAC, 26 DEC 2024 to 20 FEB 2025