

YIGO, GUAM I, GUAM

TACAN Y RWY 24L

VORTAC UNZ 115.8 Chan T05	APCH CRS 236°	Rwy ldg TDZE Arprt Elev	11,200 607 617
---	-------------------------	-------------------------------	---

- (USAF)

ANDERSEN AFB (PGUA)

⚠ * When ALS inop increase CAT AB RVR to 55, vis to 1 mile; CAT CDE RVR to 50, vis to 1 mile.
** Circling not authorized NW of Rwy 06L-24R.

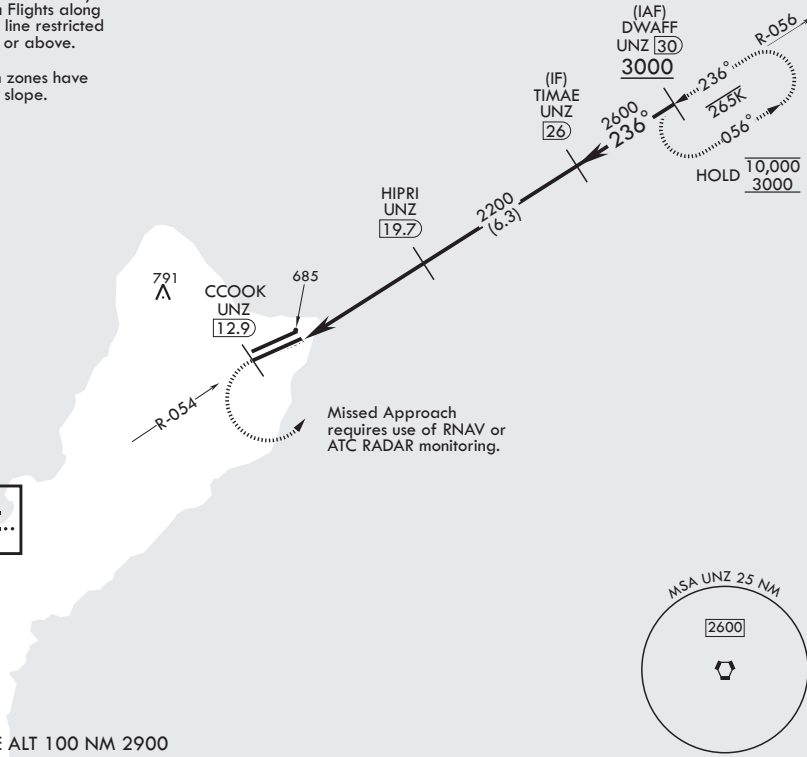


MISSED APPROACH: Climb to 3000 direct CCOOK, then climbing left turn to intercept UNZ R-056 and hold.

ATIS 118.175 254.325	GUAM APP CON/DEP CON 119.8 269.0	TOWER 126.2 233.7	GND CON 121.7 275.8	CLNC DEL 126.725 256.7
--------------------------------	--	-----------------------------	-------------------------------	----------------------------------

CAUTION: Environmentally Sensitive Area Flights along Andersen cliff line restricted to 1000' AGL or above.

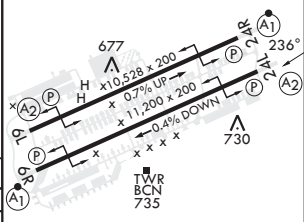
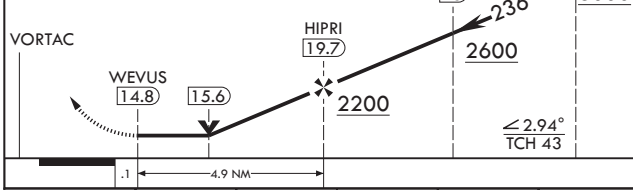
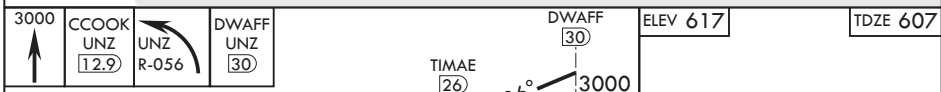
All touchdown zones have a 1.0% down slope.



NIMITZ 115.8 UNZ Chan T05

1074

EMERG SAFE ALT 100 NM 2900



CATEGORY	A	B	C	D	E
S-24L*	940/40 333 (400-¾)		940/45 333 (400-¾)		
C CIRCLING**	1060-1 443 (500-1)	1080-1 463 (500-1)	1240-1¾ 623 (700-1¾)	1240-2 623 (700-2)	1240-2¼ 623 (700-2¼)

HIRL all Rwys

YIGO, GUAM I, GUAM

13°35'N - 144°56'E

ANDERSEN AFB (PGUA)

Amdt 2 17JUN21
TERPS

TACAN Y RWY 24L

PAC, 26 DEC 2024 to 20 FEB 2025

PAC, 26 DEC 2024 to 20 FEB 2025