

YIGO, GUAM I, GUAM

# TACAN Y RWY 06R

VORTAC UNZ <b>115.8</b> Chan <b>T05</b>	APCH CRS <b>054°</b>	Rwy ldg TDZE <b>11,200</b> <b>557</b>	Arprt Elev <b>617</b>
---	-------------------------	---	--------------------------

-(USAF)

ANDERSEN AFB (PGUA)

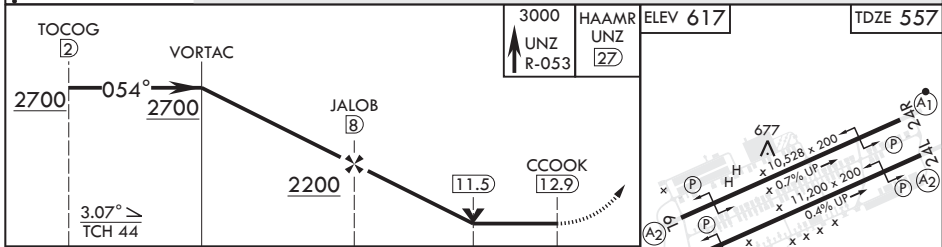
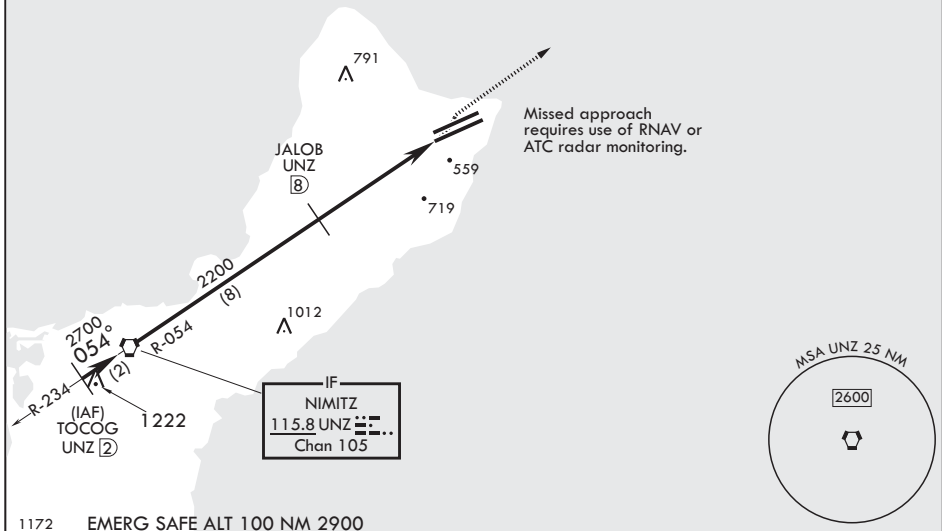
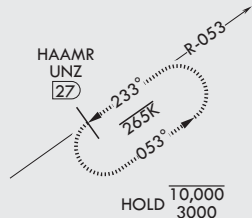
**▼** \* When ALS inop, increase CAT AB RVR to 55, vis to 1 mile, CAT CDE vis to 1 3/8 miles.  
\*\* Circling not authorized NW of Rwy 6L-24R.

ALSF-1 MISSED APPROACH: Climb to 3000, intercept UNZ R-053 to HAAMR and hold.

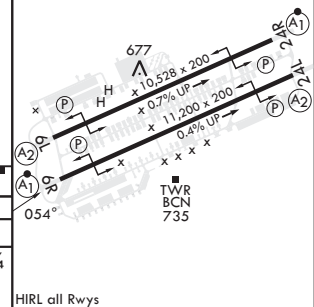
ATIS <b>118.175 254.325</b>	GUAM APP CON/DEP CON <b>119.8 269.0</b>	TOWER <b>126.2 233.7</b>	GND CON <b>121.7 275.8</b>	CLNC DEL <b>126.725 256.7</b>
--------------------------------	--	-----------------------------	-------------------------------	----------------------------------

CAUTION: Environmentally Sensitive Area Flights along Anderson cliff line restricted to 1000' AGL or above.

All touchdown zones have a 1.0% down slope.



CATEGORY	A	B	C	D	E
S-6R*	1060/24	503 (500-½)	1060/55	503	(500-1)
<b>☐</b> CIRCLING**	1060-1 443 (500-1)	1080-1 463 (500-1)	1240-1¾ 623 (700-1¾)	1240-2 623 (700-2)	1240-2¼ 623 (700-2¼)



YIGO, GUAM I, GUAM

13°35'N - 144°56'E

ANDERSEN AFB (PGUA)

Amdt 2 17JUN21  
TERPS

# TACAN Y RWY 06R

PAC, 26 DEC 2024 to 20 FEB 2025

PAC, 26 DEC 2024 to 20 FEB 2025