

# NDB/DME RWY 15

NDB/DME EHM <b>385</b> Chan <b>18 (Y)</b>	APCH CRS <b>182°</b>	Rwy ldg TDZE <b>456</b> Arpt Elev <b>531</b>
---	-------------------------	---

[USAF]

CAPE NEWENHAM LRRS (PAEH)

▼ Night operations not authorized. MISSED APPROACH: Climbing right turn to 4500, intercept EHM NDB 002° bearing to ELPEE and hold, continue climb in holding to 4500.

ANCHORAGE CENTER **124.2 251.1** CAPE NEWENHAM RADIO **126.2**

**MILITARY CERTIFIED AIRCREWS OR AUTHORIZED CONTRACT AIRCRAFT ONLY**

**NOT FOR CIVIL USE**

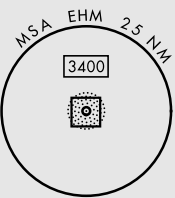
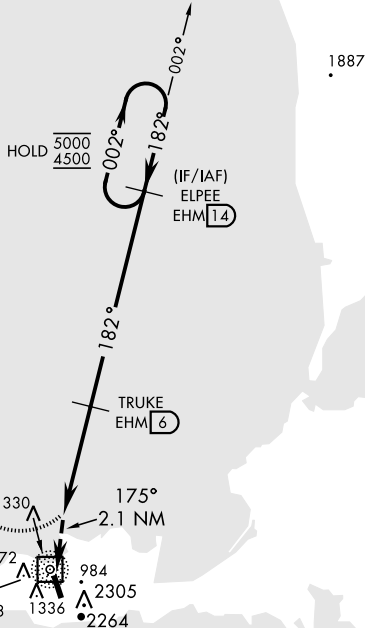
**CAUTION:**

1. Rwy located on slope of 2306' mountain. High terrain both sides and S end of Rwy.

2. Successful go-around improbable if initiated past the MAP.

Uncontrolled Airspace below 700' AGL within 7 NM of Cape Newenham airport.

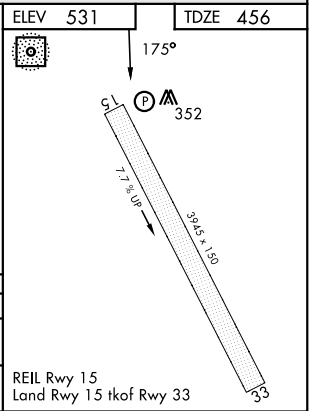
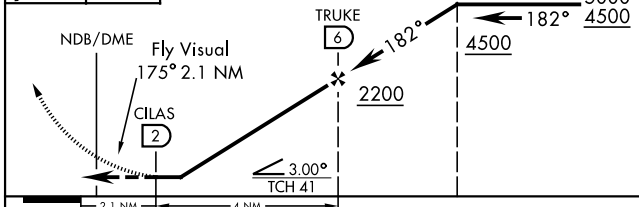
Terrain, 235' MSL, 200' from threshold, 1611' left of course.



CAPE NEWENHAM  
385 EHM  
Chan 18 (Y)

EMERG SAFE ALT 100 NM 7100

4500 brg 002°	ELPEE EHM 14	VGSI and descent angles not coincident (VGSI 3.00/TCH 45)	ELPEE 14	ELEV 531	TDZE 456
------------------	--------------	---	----------	----------	----------



CATEGORY	A	B	C	D
S-15	1240-2½	784	(800-2½)	NOT AUTHORIZED
CIRCLING	NOT AUTHORIZED			

REIL Rwy 15  
Land Rwy 15 tkof Rwy 33

# NDB/DME RWY 15

AK, 26 DEC 2024 to 20 FEB 2025

AK, 26 DEC 2024 to 20 FEB 2025