

CAPE NEWENHAM, ALASKA

RNAV (GPS) RWY 15

APCH CRS	Rwy Idg	3945
172°	TDZE	456
	Arprt Elev	531

- (USAF)

CAPE NEWENHAM LRRS (PAEH)

RNP APCH	MISSED APPROACH: Climbing right turn to 3500 direct WAGEN and hold.
----------	---

ANCHORAGE CENTER 124.2 251.1	RADIO 126.2 (CTAF)
---------------------------------	-----------------------

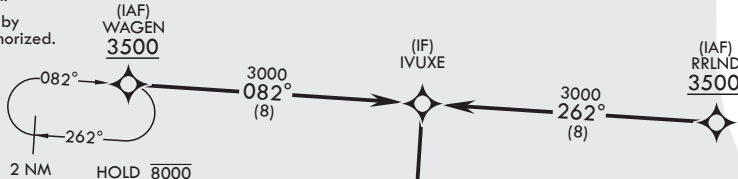
Straight-in Rwy 15 at night, operational VGSI required, remain on or above VGSI glidepath until threshold.

USAF Only: When VGSI inop, straight-in Rwy 15 authorized at night with command approval.

Visibility reduction by helicopters not authorized.

CAUTION:

- Rwy located on slope of 2306' mountain. High terrain both sides and S end of rwy.
- Successful go-around improbable if initiated past the MAP.



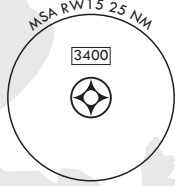
Unlit terrain 235' MSL, 200' from threshold, 200' left of course.

Uncontrolled Airspace below 700' AGL within 7 NM of Cape Newenham airport.

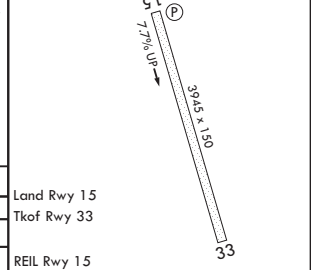
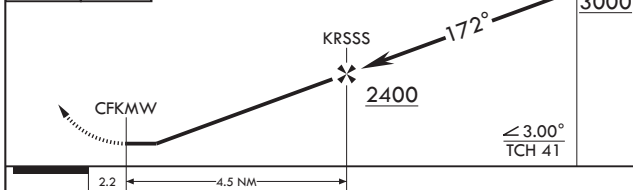
NOT FOR CIVIL USE

MILITARY CERTIFIED AIRCREWS OR AUTHORIZED CONTRACT AIRCRAFT ONLY

EMERG SAFE ALT 100 NM 7100



3500	WAGEN	VGSI and descent angles not coincident (VGSI Angle 3.00°/TCH 45).	ELEV 531	TDZE 456
------	-------	---	----------	----------



CATEGORY	A	B	C	D	Land Rwy 15
LNAV MDA	1260-3	804	(800-3)	NA	Tkof Rwy 33
CIRCLING	NOT AUTHORIZED				REIL Rwy 15

CAPE NEWENHAM, ALASKA

58°39'N - 162°04'W

CAPE NEWENHAM LRRS (PAEH)

Amdt 4 25JAN24

RNAV (GPS) RWY 15

AK, 26 DEC 2024 to 20 FEB 2025

AK, 26 DEC 2024 to 20 FEB 2025