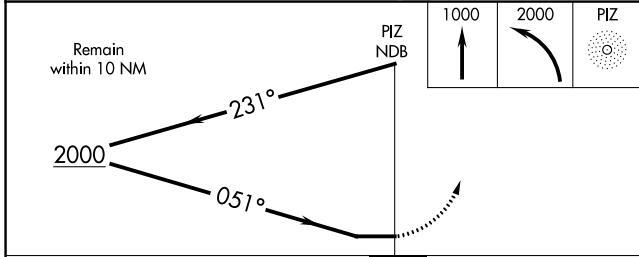
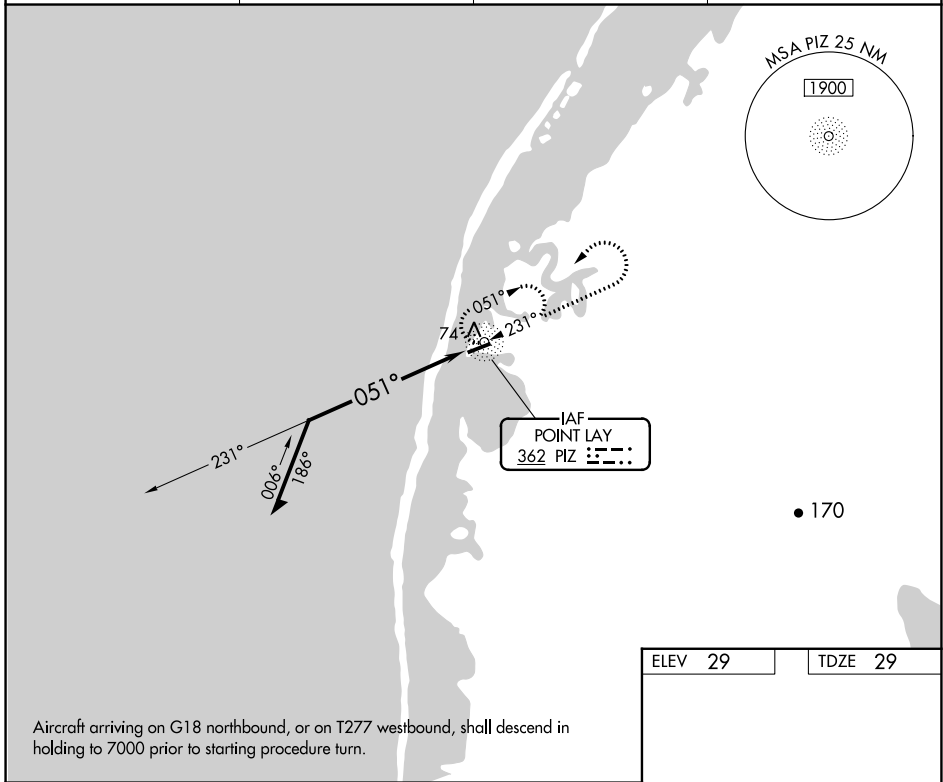


NDB PIZ <b>362</b>	APP CRS <b>051°</b>	Rwy Idg <b>4500</b> TDZE <b>29</b> Apt Elev <b>29</b>
-----------------------	------------------------	---

**NDB RWY 5**  
POINT LAY LRRS (PIZ) (PPIZ)

-33°C		MISSED APPROACH: Climb to 1000, then climbing left turn to 2000 direct PIZ NDB and hold.	
AWOS-3P <b>135.65</b>	ANCHORAGE CENTER <b>119.65 363.25</b>	BARROW RADIO <b>122.4</b>	CTAF <b>122.8</b>



ELEV 29	TDZE 29
---------	---------

MIRL Rwy 5-23  
REIL Rlys 5 and 23

CATEGORY	A	B	C	D
S-5	500-1 471 (500-1)		500-1 ¼ 471 (500-1 ¼)	NA
CIRCLING	500-1 471 (500-1)		500-1 ½ 471 (500-1 ½)	NA

AK, 26 DEC 2024 to 20 FEB 2025

AK, 26 DEC 2024 to 20 FEB 2025