

CAPE ROMANZOF SIX DEPARTURE (OBSTACLE) (CZF6.HPB)

[USAF]

CTAF
126.2
KENAI RADIO
122.1
ANCHORAGE CENTER
124.5 266.8

MILITARY CERTIFIED
AIRCREWS OR AUTHORIZED
CONTRACT AIRCRAFT ONLY

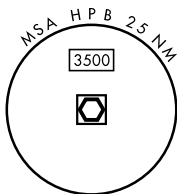
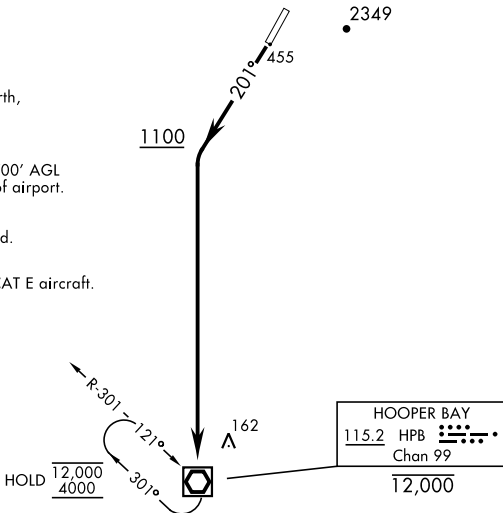
NOT FOR CIVIL USE

CAUTION:
Terrain rises rapidly West, North,
and East of centerline.

Uncontrolled Airspace below 700' AGL
within 7 NM of Cape Romanzof airport.

Night operations not authorized.

Procedure not authorized for CAT E aircraft.



AK, 26 DEC 2024 to 20 FEB 2025

AK, 26 DEC 2024 to 20 FEB 2025



DEPARTURE ROUTE DESCRIPTION

TAKEOFF RWY 2: Departures not authorized.

TAKEOFF RWY 20: Climb heading 201° to 1100, then climbing left turn direct
HPB VOR/DME and hold, continue climb to 4000 or ATC assigned altitude.