

# NDB/DME RWY 2

|                       |                         |  |
|-----------------------|-------------------------|--|
| NDB CZF<br><b>275</b> | APCH CRS<br><b>051°</b> | Rwy Idg<br>TDZE<br>Arprt Elev<br><b>3925</b><br><b>444</b><br><b>467</b> |
|-----------------------|-------------------------|--|

[USAF]

CAPE ROMANZOF LRRS (PACZ)

▼ Night operations not authorized. Helicopter vis reduction below 1 mile not authorized. Circling not authorized.

MISSED APPROACH: Climb left turn to 3600 to intercept CZF NDB 231° bearing to MOTRS/12 DME and hold.

|  |                      |                             |
|--|----------------------|-----------------------------|
| ANCHORAGE CENTER<br><b>124.5 266.8</b> | CRAF<br><b>126.2</b> | KENAI RADIO<br><b>122.1</b> |
|--|----------------------|-----------------------------|

CAUTION: Final Approach Course intersects extended runway centerline 4520' prior to threshold.

Misled approach requires use of RNAV or ATC RADAR monitoring.

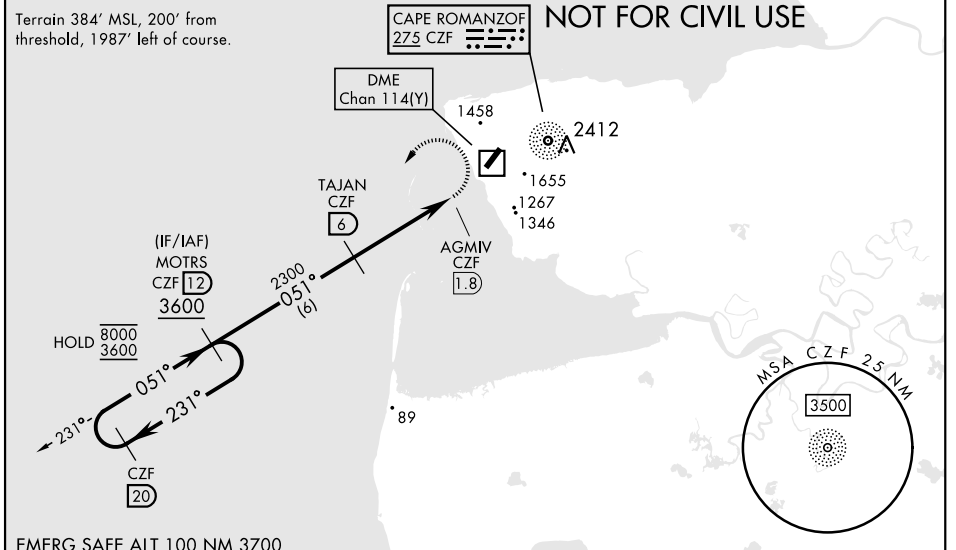
Successful go-around improvable if initiated beyond the MAP.

Uncontrolled Airspace below 700' AGL within 7 NM of Cape Romanzof airport.

Terrain 384' MSL, 200' from threshold, 1987' left of course.

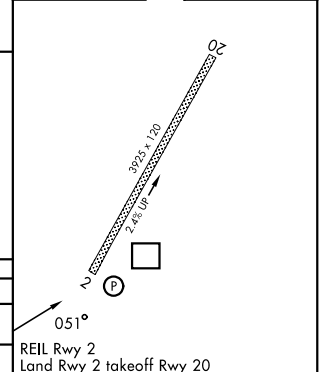
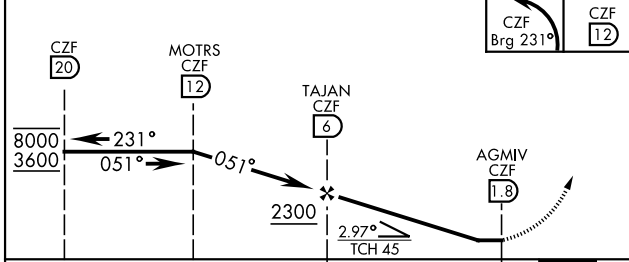
## MILITARY CERTIFIED AIRCREWS OR AUTHORIZED CONTRACT AIRCRAFT ONLY

### NOT FOR CIVIL USE



EMERG SAFE ALT 100 NM 3700

|                         |                    |          |          |
|-------------------------|--------------------|----------|----------|
| 3600<br>CZF<br>Brg 231° | MOTRS<br>CZF<br>12 | ELEV 467 | TDZE 444 |
|-------------------------|--------------------|----------|----------|



|            |                |                |                         |
|------------|----------------|----------------|-------------------------|
| CATEGORY   | A              | B              | C                       |
| S-2        | 1580-2½        | 1136 (1200-2½) | 1580-3<br>1136 (1200-3) |
| ☑ CIRCLING | NOT AUTHORIZED |                |                         |

REIL Rwy 2  
Land Rwy 2 takeoff Rwy 20

# NDB/DME RWY 2

AK, 26 DEC 2024 to 20 FEB 2025

AK, 26 DEC 2024 to 20 FEB 2025