

CAPE ROMANZOF, ALASKA

RNAV (GPS) RWY 2

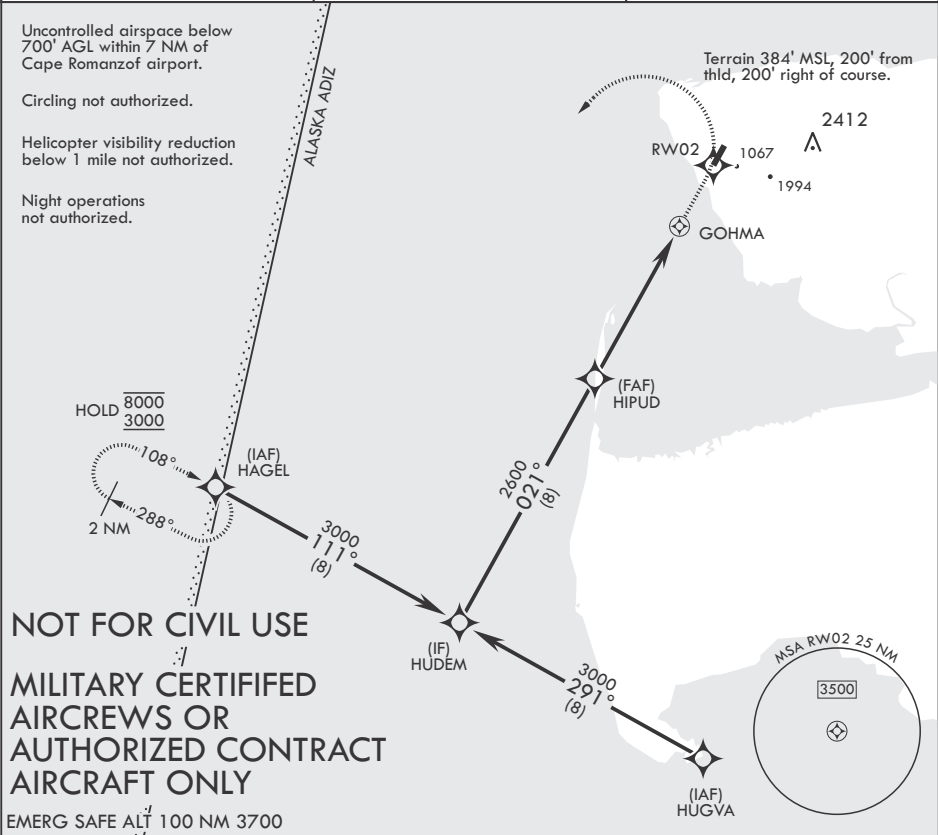
APCH CRS	Rwy Idg	3925
021°	TDZE	444
	Arpt Elev	467

- (USAF)

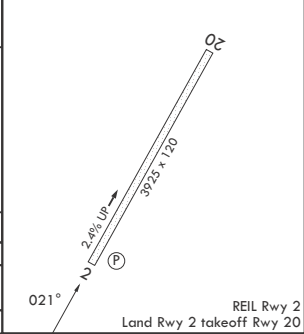
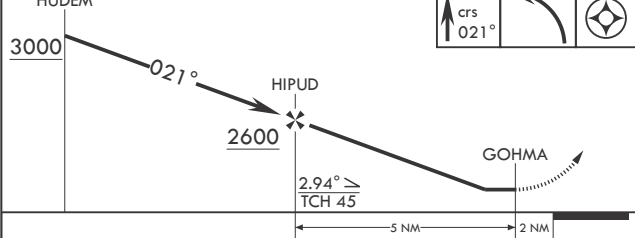
CAPE ROMANZOF LRRS (PACZ)

RNP APCH-GPS	MISSED APPROACH: Climb to 1500 then climbing left turn to 3000 direct HAGEL and hold.
--------------	---

ANCHORAGE CENTER 124.5 266.8	CTAF 126.2	KENAI RADIO 122.1
--	----------------------	-----------------------------



HUDEM	1500	3000	HAGEL	ELEV 467	TDZE 444
-------	------	------	-------	----------	----------



CATEGORY	A	B	C	D
LNAV MDA	1540-2½	1095 (1100-2½)	1540-3 1095 (1100-3)	NA
CIRCLING	NOT AUTHORIZED			

CAPE ROMANZOF, ALASKA

61°47'N - 166°02'W

CAPE ROMANZOF LRRS (PACZ)

Orig 11JUL24

RNAV (GPS) RWY 2

REIL Rwy 2

Land Rwy 2 takeoff Rwy 20

AK, 26 DEC 2024 to 20 FEB 2025

AK, 26 DEC 2024 to 20 FEB 2025