

24361

[USAF]

CAPE LISBURNE LRRS (PALU)

GRAAY FOUR DEPARTURE (RNAV) (GRAAY4.JAPKI)

CAPE LISBURNE, ALASKA

ANCHORAGE CENTER
119.65 363.25
KOTZEBUE RADIO ★
122.3
CTAF
126.2

RNAV1 - GPS

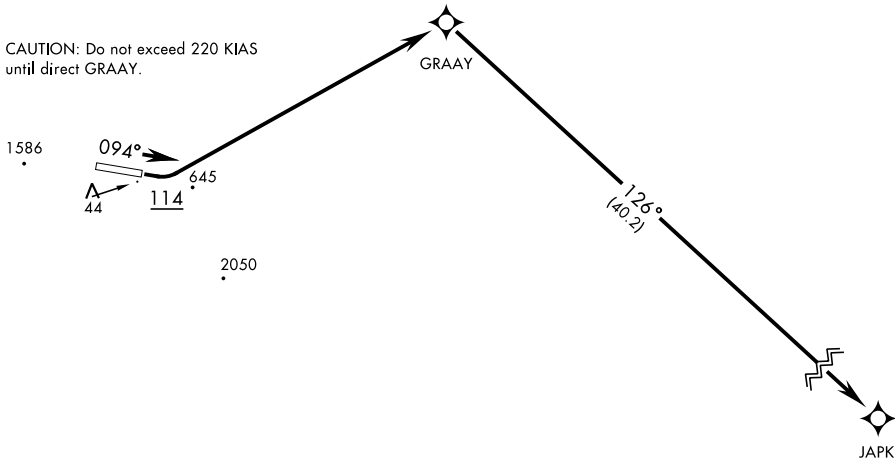
Rwy	Knots	60	120	180	240	300	360
9	V/V(fpm)	362	724	1086	1448	1810	2172

Minimum climb gradient to 600

NOT FOR CIVIL USE

FOR USE BY MILITARY CERTIFIED AIRCREWS OR AUTHORIZED CONTRACT AIRCRAFT ONLY

CAUTION: Do not exceed 220 KIAS until direct GRAAY.



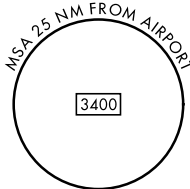
WARNING: High terrain within 2 NM of departure end of runway. Prompt compliance with departure instructions is essential to flight safety. Do not delay initial turn at 114°.

Night operations not authorized.

Procedure NA for CAT E aircraft.

Uncontrolled Airspace below 700' AGL within 7 NM of Cape Lisburne airport.

Takeoff minimums: Rwy 9, standard with minimum climb or 362H/NM to 600'.



DEPARTURE ROUTE DESCRIPTION

TAKEOFF RWY 9: Climb on heading 094° to 114, then climbing left turn direct GRAAY, then track 126° to JAPKI, maintain 8000 or as assigned by ATC.

TAKEOFF RWY 27: NOT AUTHORIZED

GRAAY FOUR DEPARTURE (RNAV) (GRAAY4.JAPKI)

CAPE LISBURNE, ALASKA
CAPE LISBURNE LRRS (PALU)

Orig 30NOV23

AK, 26 DEC 2024 to 20 FEB 2025

AK, 26 DEC 2024 to 20 FEB 2025