

NDB/DME LUR 385 Chan 20 (Y)	APCH CRS 235°	Rwy Idg THRE Arprt Elev 4800 N/A 14
---	-------------------------	---

[USAF]

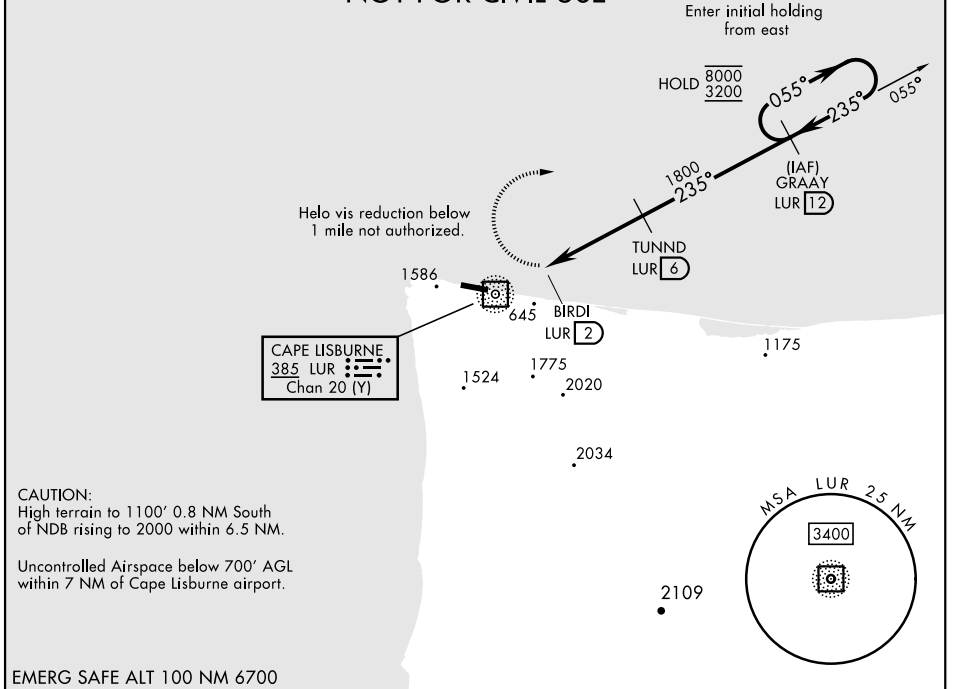
CAPE LISBURNE LRRS (PALU)

▼ *Circling not authorized S of Rwy 9-27.
Night operations not authorized.

MISSED APPROACH: Climbing right turn to 3200, intercept LUR 055° bearing to GRAAY and hold.

ANCHORAGE CENTER 119.65 363.25	KOTZEBUE RADIO ★ 122.3	CTAF 126.2
--	----------------------------------	----------------------

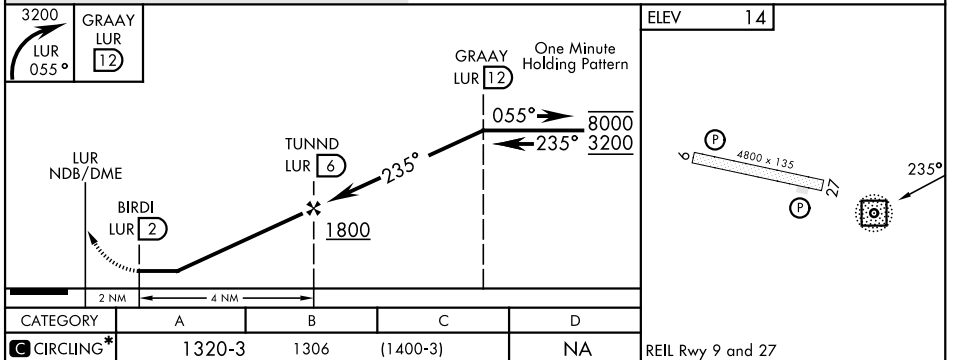
**MILITARY CERTIFIED
AIRCREWS OR AUTHORIZED
CONTRACT AIRCRAFT ONLY
NOT FOR CIVIL USE**



CAUTION:
High terrain to 1100' 0.8 NM South
of NDB rising to 2000 within 6.5 NM.

Uncontrolled Airspace below 700' AGL
within 7 NM of Cape Lisburne airport.

EMERG SAFE ALT 100 NM 6700



AK, 26 DEC 2024 to 20 FEB 2025

AK, 26 DEC 2024 to 20 FEB 2025