

RNAV (GPS) RWY 27

APCH CRS	Rwy ldg	4800
258°	THRE	14
	Arpt Elev	14

[USAF]

CAPE LISBURNE LRRS (PALU)

RNP APCH - GFS

MISSED APPROACH: (Do not exceed 220 KIAS until turn completion).
Climbing right turn to 3200 direct TAKME and hold.

ANCHORAGE CENTER
119.65 363.25

KOTZEBUE RADIO ★
122.3

CTAF
126.2

**MILITARY CERTIFIED
AIRCRAFTS OR AUTHORIZED
CONTRACT AIRCRAFT
ONLY**

NOT FOR CIVIL USE

Helo vis reduction below 1 mile not authorized.
Uncontrolled Airspace below 700' AGL within 7 NM of Cape Lisburne airport.

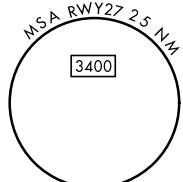
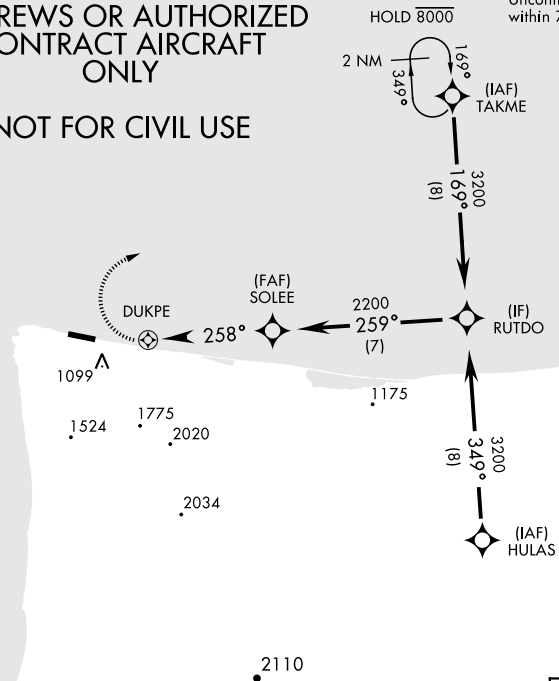
Unlit weather equipment,
168' MSL, 278' from thld,
19' right of course.

Terrain 630' MSL,
1.88 NM from thld,
1159' left of course.

Terrain 31' MSL,
200' from thld,
200' left of course.

Terrain 30' MSL,
244' from thld,
172' left of course.

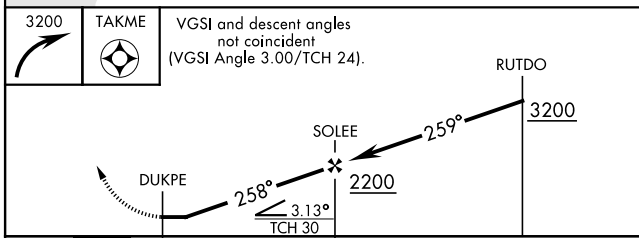
Terrain 597' MSL,
1.91 NM from thld,
1118' left of course.



AK, 26 DEC 2024 to 20 FEB 2025

AK, 26 DEC 2024 to 20 FEB 2025

EMERG SAFE ALT 100 NM 6700



ELEV	14	THRE	14
------	----	------	----

	<p>VGSI and descent angles not coincident (VGSI Angle 3.00/TCH 24).</p>			
CATEGORY	A	B	C	D
LNAV MDA	1320-2½	1306 (1400-2½)	1320-3 1306 (1400-3)	NOT AUTHORIZED
CIRCLING *	1320-2½	1306 (1400-2½)	1320-3 1306 (1400-3)	NOT AUTHORIZED

REIL Rwy 9 and 27

RNAV (GPS) RWY 27