

# NDB RWY 35

NDB CRN <b>281</b>	APCH CRS <b>357°</b>	Rwy Idg TDZE Arprt Elev <b>4200</b> <b>1476</b> <b>1565</b>
-----------------------	-------------------------	--

[USAF]

SPARREVOHN LRRS (PASV)

▼ Night operations not authorized.  
Visibility reduction by helicopters NA.

MISSED APPROACH: Climb to 4200, then climbing right turn to 5600 direct CRN and hold. Continue climb in hold to 5600.

ANCHORAGE CENTER  
**134.3 351.8**

KENAI RCO  
**122.5**

SPARREVOHN RADIO  
**126.2** (CTAF)

AWOS-3

CAUTION: Rwy surrounded by mountains.  
Rwy located on slope of 3236' mountain.  
Approach from S only, land Rwy 35 only.

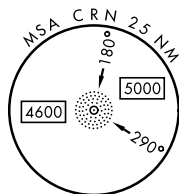
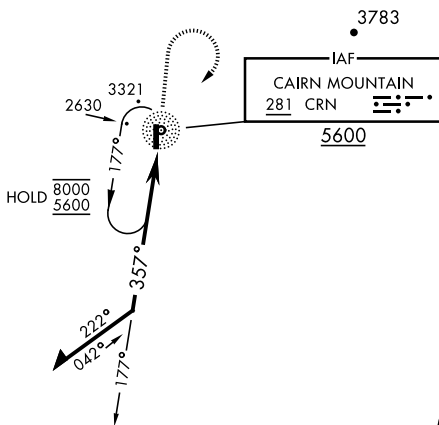
CAUTION: Terrain 1530' MSL, 2773' from thld,  
1008' left of course.

Successful go-around improbable  
if initiated past the MAP.

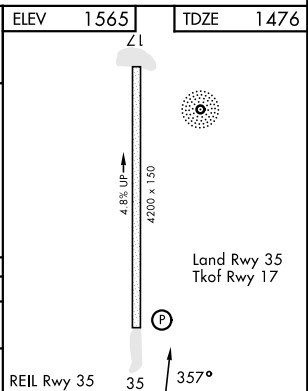
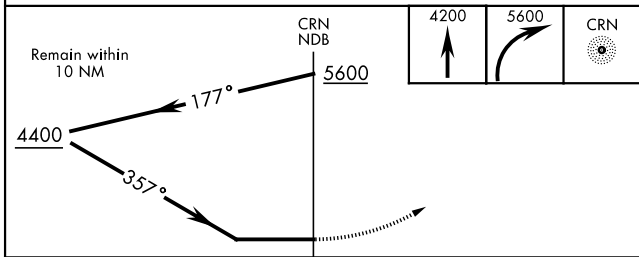
Uncontrolled Airspace  
below 700' AGL within  
3 NM of Sparrevohn  
airport.

## MILITARY CERTIFIED AIRCREWS OR AUTHORIZED CONTRACT AIRCRAFT ONLY

### NOT FOR CIVIL USE



EMERG SAFE ALT 100 NM 13,700



CATEGORY	A	B	C	D
S-35	3580-1¼ 2104 (2100-1¼)	3580-1½ 2104 (2100-1½)	3580-3 2104 (2100-3)	NOT AUTHORIZED
CIRCLING	NOT AUTHORIZED			

# NDB RWY 35

AK, 26 DEC 2024 to 20 FEB 2025

AK, 26 DEC 2024 to 20 FEB 2025