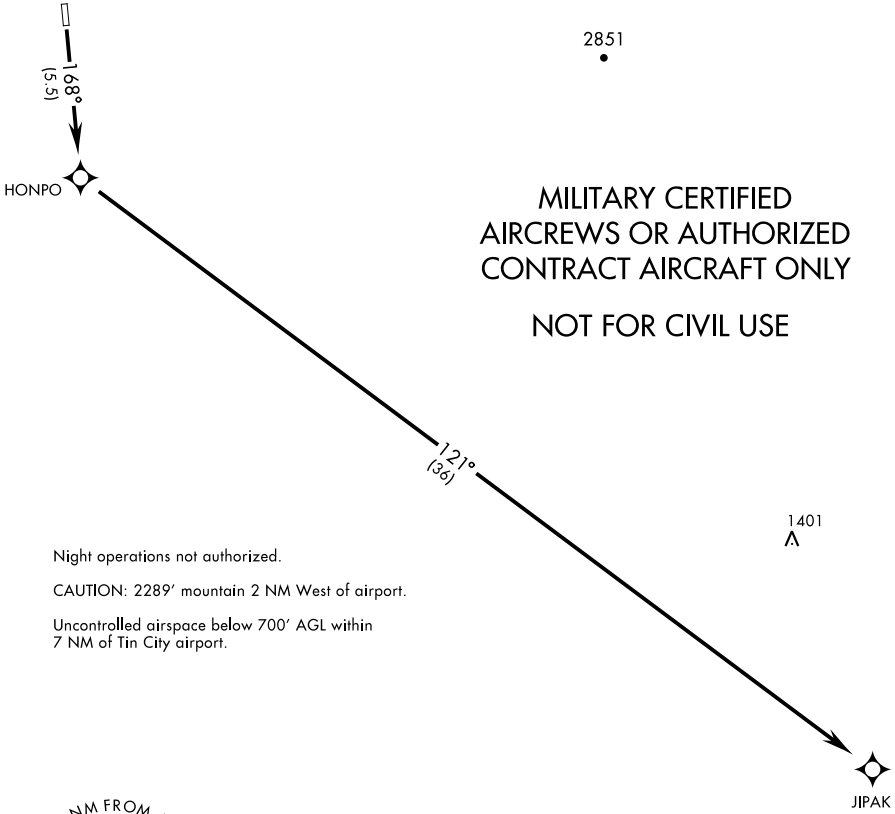


HONPO THREE DEPARTURE (OBSTACLE) (RNAV) (HONPO3.JIPAK)

UNICOM (CTAF)
126.2
TIN CITY RCO (NOME RADIO)
122.6
ANCHORAGE CENTER
133.3 290.4



Night operations not authorized.
CAUTION: 2289' mountain 2 NM West of airport.
Uncontrolled airspace below 700' AGL within
7 NM of Tin City airport.

AK, 26 DEC 2024 to 20 FEB 2025

AK, 26 DEC 2024 to 20 FEB 2025

DEPARTURE ROUTE DESCRIPTION

TAKEOFF RWY 17: Climb to 7000 direct HONPO, then climbing left turn,
track 121° to JIPAK.

TAKEOFF RWY 35: NA