

NDB/DME RWY 35

NDB/DME TNC 347 Chan 119 (Y)	APCH CRS 343°	Rwy Idg TDZE 273 Arprt Elev 273	4702
--	-------------------------	--	-------------

[USAF]

TIN CITY LRRS (PATC)

▼ * Circling not authorized W of Rwy 17-35.
Night operations not authorized.

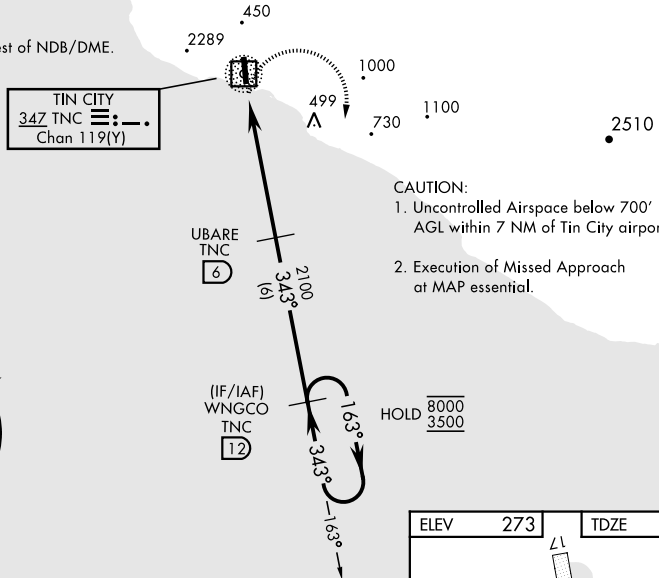
MISSED APPROACH: Climbing right turn to 3600 intercept TNC 163° bearing to WNGCO and hold.
Continue climb-in-hold to 3600.

ANCHORAGE CENTER 133.3 290.4	TIN CITY RCO (NOME RADIO) 122.6	UNICOM 126.2 (CTAF)
--	---	-------------------------------

MILITARY CERTIFIED AIRCREWS OR AUTHORIZED CONTRACT AIRCRAFT ONLY

NOT FOR CIVIL USE

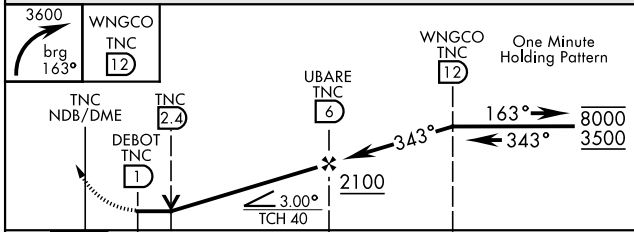
CAUTION:
2289' mountain 2 NM West of NDB/DME.



AK, 26 DEC 2024 to 20 FEB 2025

AK, 26 DEC 2024 to 20 FEB 2025

EMERG SAFE ALT 100 NM 7000



ELEV 273	TDZE 273
----------	----------

200' x 100'

0.3 UP

35

343°

CATEGORY	A	B	C	D
S-35	980-1 707 (800-1)		980-2 707 (800-2)	NOT AUTHORIZED
◼ CIRCLING*	980-1 707 (800-1)		980-2 707 (800-2)	NOT AUTHORIZED

REIL Rwy 17-35

NDB/DME RWY 35