

RNAV (GPS) RWY 35

APCH CRS	Rwy ldg	4702
349°	TDZE	273
	Arpt Elev	273

[USAF]

TIN CITY LRSS (PATC)

RNP APCH-GPS

▼ Night operations not authorized.
* Circling not authorized W of Rwy 17-35.

MISSED APPROACH: Climb to 1500 then climbing right turn to 4000 direct JAGMA and hold.

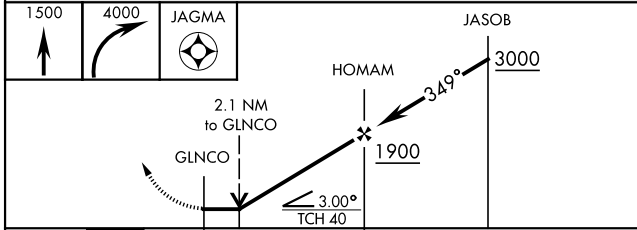
ANCHORAGE CENTER
133.3 290.4

TIN CITY RCO (NOME RADIO)
122.6

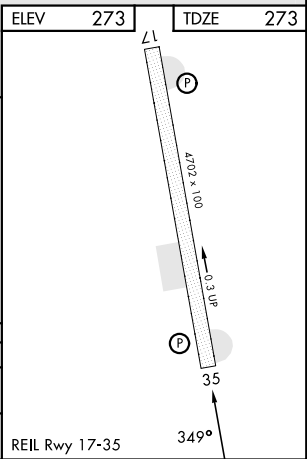
UNICOM
126.2 (CTAF)



EMERG SAFE ALT 100 NM 7000



CATEGORY	A	B	C	D
RNAV MDA	1260-1¼ 987 (1000-1¼)	1260-1½ 987 (1000-1½)	1280-3 1007 (1100-3)	NA
CIRCLING*	1260-1¼ 987 (1000-1¼)	1260-1½ 987 (1000-1½)	1280-3 1007 (1100-3)	NA



RNAV (GPS) RWY 35

AK, 26 DEC 2024 to 20 FEB 2025

AK, 26 DEC 2024 to 20 FEB 2025