

NDB RWY 25

NDB/DME UTO 272	APCH CRS 256°	Rwy Idg TDZE Arpt Elev 4100 1161 1261
Chan 22 (Y)		

[USAF]

INDIAN MOUNTAIN LRRS (PAIM)

<p>Night operations not authorized.</p>	<p>MISSED APPROACH: Climb to 5000, then climbing left turn to 6600 direct UTO NDB and hold. Continue climb climb-in-hold to 6600.</p>
--	--

<p>ANCHORAGE CENTER APP/DEP CON 124.6 352.0</p>	<p>RCO (FAIRBANKS) 122.6</p>	<p>CTAF 126.2</p>	<p>AWOS-3</p>
--	---	------------------------------	---------------

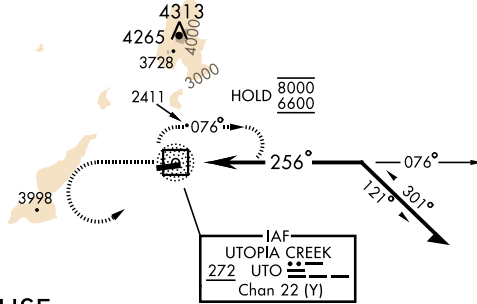
CAUTION: Rwy located on a slope of a 3415' mountain with W end at the base of cliff, APPROACH ONLY FROM THE EAST.

Successful go around improbable if initiated past MAP.

Uncontrolled Airspace below 700' AGL within 4 NM of Indian Mountain airport.

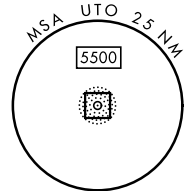
Visibility reduction by helicopters NA.

PAPI Beyond 8° right of RCL unusable.



NOT FOR CIVIL USE

MILITARY CERTIFIED AIRCREWS or AUTHORIZED CONTRACT AIRCRAFT ONLY



EMERG SAFE ALT 100 NM 10,100

<p>5000 6600 UTO</p>	<p>NDB/DME</p>	<p>ELEV 1261</p>	<p>TDZE 1161</p>	
<p>5500 5100 076° 256° Remain within 10 NM</p>		<p>Land Rwy 25 Takeoff Rwy 7</p>		
<p>4100 x 150 7.3% UP</p>		<p>REIL Rwy 25</p>		
CATEGORY	A	B	C	D
S-25	3940-1¼ 2779 (2700-1¼)	3940-1½ 2779 (2700-1½)	3940-3 2779 (2700-3)	NA
CIRCLING	NOT AUTHORIZED			

NDB RWY 25

AK, 26 DEC 2024 to 20 FEB 2025

AK, 26 DEC 2024 to 20 FEB 2025