

# RNAV (GPS) RWY 25

-(USAF)

INDIAN MOUNTAIN LRRS (PAIM)

APCH CRS <b>247°</b>	Rwy Idg <b>4100</b>
	TDZE <b>1161</b>
	Arprt Elev <b>1261</b>

RNP APCH-GPS	MISSED APPROACH: Climbing left turn to 7000 direct CHAZY and hold. Continue climb in hold to 7000.
--------------	--

ANCHORAGE CENTER <b>124.6 352.0</b>	CTAF <b>126.2</b>	FAIRBANKS RADIO <b>122.6</b>
--	----------------------	---------------------------------

Night operations not authorized.

Uncontrolled airspace below 700' AGL within 4 NM of Indian Mountain airport.

AWOS-3

## NOT FOR CIVIL USE

▲  
4313

▲  
2016

RW25

(FAF) DARTN

▲  
2002

▲  
2800

▲  
247° (7)

(IF) FATUR

▲  
1989

▲  
4500

▲  
337° (8)

▲  
4500

▲  
CHAZY 7000

4 NM

099°

279°

MSA RW25 2.5 NM

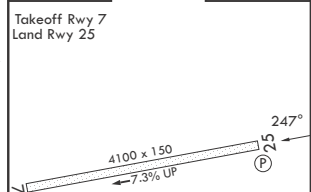
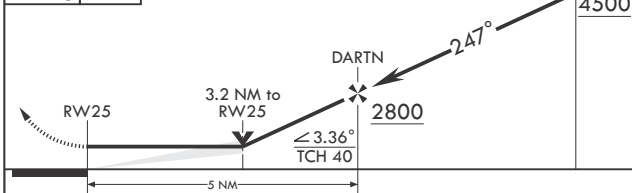
5500

2 NM

## MILITARY CERTIFIED AIRCREWS OR AUTHORIZED CONTRACT AIRCRAFT ONLY

EMERG SAFE ALT 100 NM 10,100

7000	CHAZY	VGSI and descent angles not coincident (VGSI angle 4.00/TCH 40).	PAPI beyond 8° right of RCL unusable.	FATUR	ELEV 1261	TDZE 1161
------	-------	--	---------------------------------------	-------	-----------	-----------



CATEGORY	A	B	C	D
LNAV MDA	2360-1¼ 1199 (1100-1¼)	2360-1½ 1199 (1100-1½)	NA	
CIRCLING	NOT AUTHORIZED			

REIL Rwy 25

# RNAV (GPS) RWY 25

AK, 26 DEC 2024 to 20 FEB 2025

AK, 26 DEC 2024 to 20 FEB 2025