

APCH CRS <b>039°</b>	Rwy Idg <b>4499</b> TDZE <b>14</b> Arpt Elev <b>14</b>
-------------------------	--

[USA]

DYESS AAF (PKRO)

RNP APCH - GFS  
**▲ NA** \* Circling not authorized E of Rwy 04-22.

MISSED APPROACH: Climbing left turn to 1300 direct EJOSO and hold.

AWOS  
**119.0**

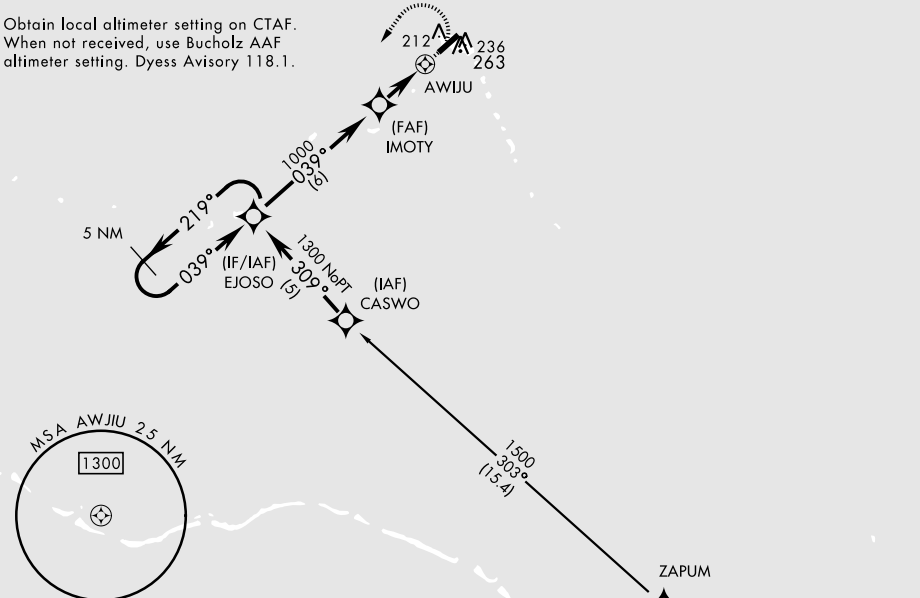
BUCHHOLZ TOWER ★  
**126.2 360.2**

ROI RADIO  
**118.8**

CTAF  
**118.1**

Procedure not authorized at night except by prior arrangement for runway lights.

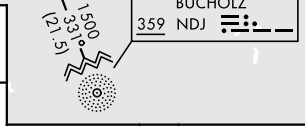
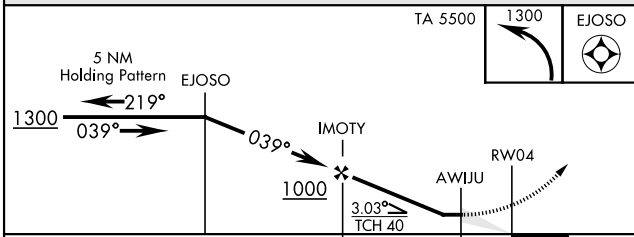
Obtain local altimeter setting on CTAF. When not received, use Buchholz AAF altimeter setting, Dyess Advisory 118.1.



PAC, 26 DEC 2024 to 20 FEB 2025

PAC, 26 DEC 2024 to 20 FEB 2025

### NOT FOR CIVIL USE



ELEV	14	TDZE	14
------	----	------	----

CATEGORY	A	B	C	D
RNAV MDA	420-1	406 (500-1)	420-1½ 406 (500-1¼)	NOT AUTHORIZED
CIRCLING*	580-1	566 (600-1)	580-1½ 566 (600-1½)	NOT AUTHORIZED
BUCHHOLZ AAF ALTIMETER SETTING MINIMUMS				
RNAV MDA	520-1	506 (600-1)	520-1½ 506 (600-1½)	NOT AUTHORIZED
CIRCLING*	680-1	666 (700-1)	680-1¾ 666 (700-1¾)	NOT AUTHORIZED

