

RNAV (GPS) RWY 11

APCH CRS	Rwy Idg	8000
105°	TDZE	318
	Arprt Elev	322

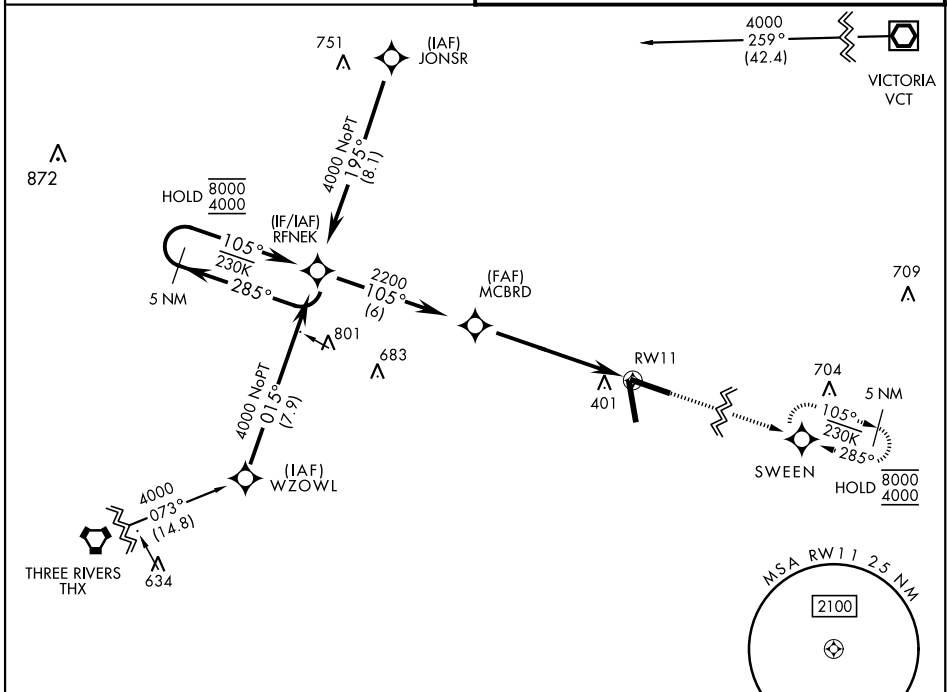
[USN]

GOLIAD NOLF (KNGT)

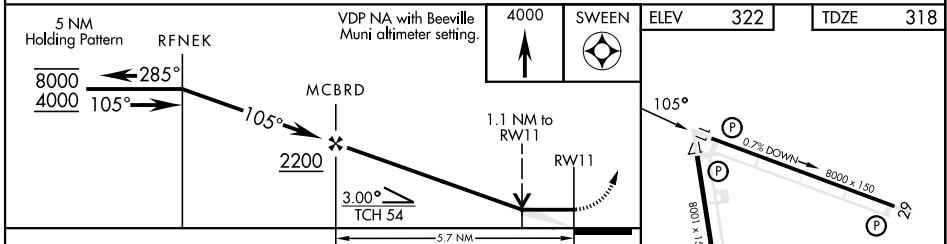
RNP APCH MISSED APPROACH: Climb to 4000 direct SWEEN and hold, continue climb-in-hold to 4000.
When local altimeter setting not received, use Beeville Muni altimeter setting.

ASOS
353.675

CTAF
132.875 307.075



US Navy Training Wing Four Use Only
EMERG SAFE ALT 100 NM 11,100



CATEGORY	A	B	C	D
LNAV MDA	720-1	402 (400-1)	720-1½	402 (400-1½)
C CIRCLING	800-1 478 (500-1)	820-1 498 (500-1)	820-1½ 498 (500-1½)	880-2 558 (600-2)
BEEVILLE MUNI ALTIMETER SETTING MINIMA				
LNAV MDA	760-1	442 (500-1)	760-1¾	442 (500-1¾)
C CIRCLING	800-1 478 (500-1)	820-1 498 (500-1)	820-1½ 498 (500-1½)	880-2 558 (600-2)

ELEV	322	TDZE	318
<p>HIRL Rwy 11-29, 17-35 TDZL Rwy 11-29, 17-35</p>			

RNAV (GPS) RWY 11

SC-3, 26 DEC 2024 to 23 JAN 2025

SC-3, 26 DEC 2024 to 23 JAN 2025