

RNAV (GPS) RWY 35

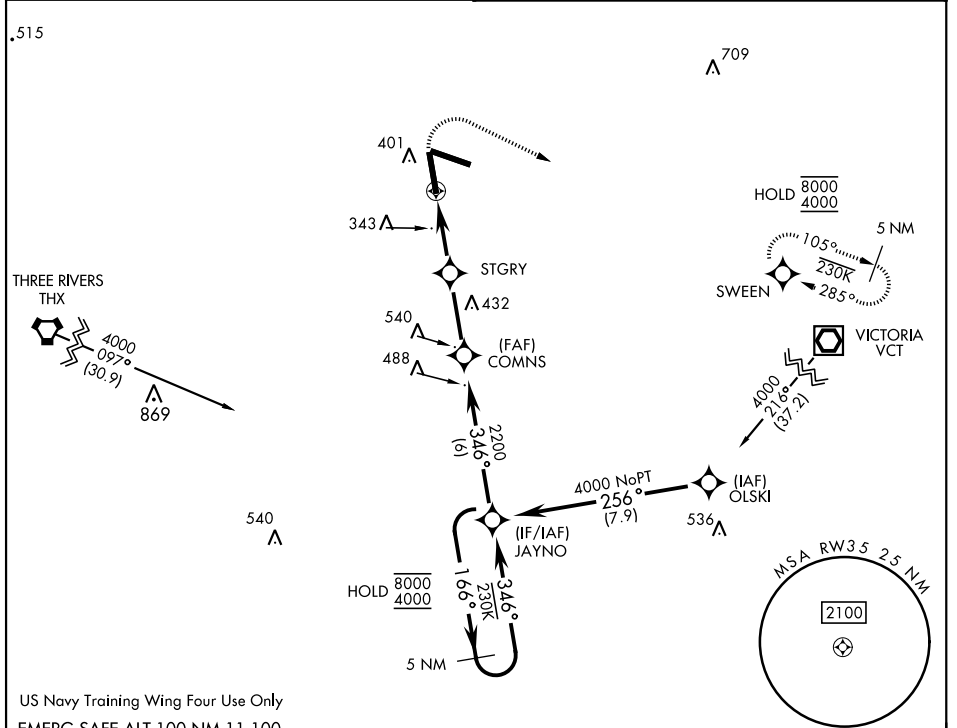
APCH CRS	Rwy ldg	8001
346°	TDZE	307
	Arpt Elev	322

[USN]

GOLIAD NOLF (KNGT)

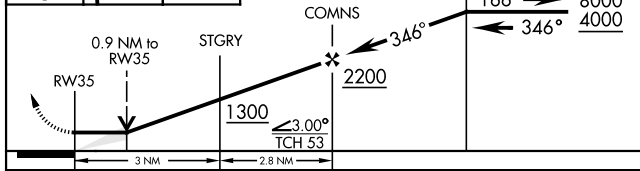
RNP APCH	MISSED APPROACH: Climb to 900 then climbing right turn to 4000 direct SWEEN and hold, continue climb-in-hold to 4000.
----------	---

ASOS 353.675	CTAF 132.875 307.075
-----------------	-------------------------

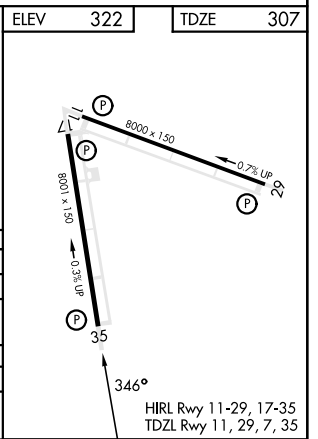


US Navy Training Wing Four Use Only
EMERG SAFE ALT 100 NM 11,100

900	4000	SWEEN	VDP NA with Beeville Muni altimeter setting.	JAYNO	5 NM Holding Pattern	ELEV 322	TDZE 307
-----	------	-------	--	-------	----------------------	----------	----------



CATEGORY	A	B	C	D
LNVA MDA	620-1 313 (300-1)			
CIRCLING	760-1	780-1	780-1½	880-2
	438 (500-1)	458 (500-1)	458 (500-1½)	558 (600-2)
BEEVILLE MUNI ALTIMETER SETTING MINIMA				
LNVA MDA	660-1 353 (400-1)			
CIRCLING	800-1	820-1	820-1½	880-2
	478 (500-1)	498 (500-1)	498 (500-1½)	558 (600-2)



RNAV (GPS) RWY 35

SC-3, 26 DEC 2024 to 23 JAN 2025

SC-3, 26 DEC 2024 to 23 JAN 2025