

| | | | |
|---------------------------|------------------------|-----------------------------|---------------------------------------|
| NDB/DME TTK 375 | APP CRS 054° | Rwy Idg TDZE Apt Elev | 6013 10 10 |
| Chan 111 (116.4) | | | |

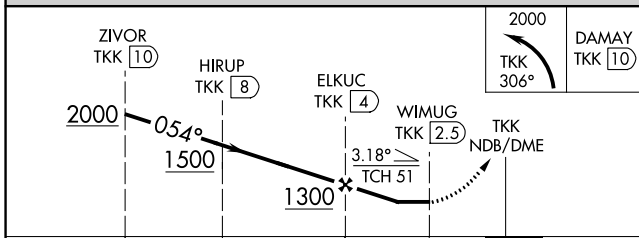
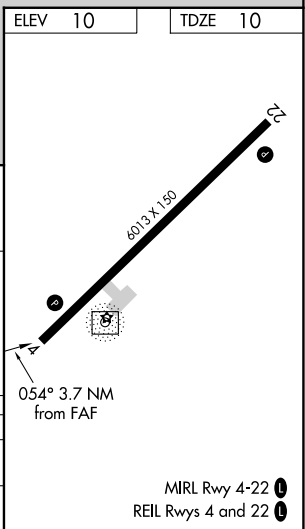
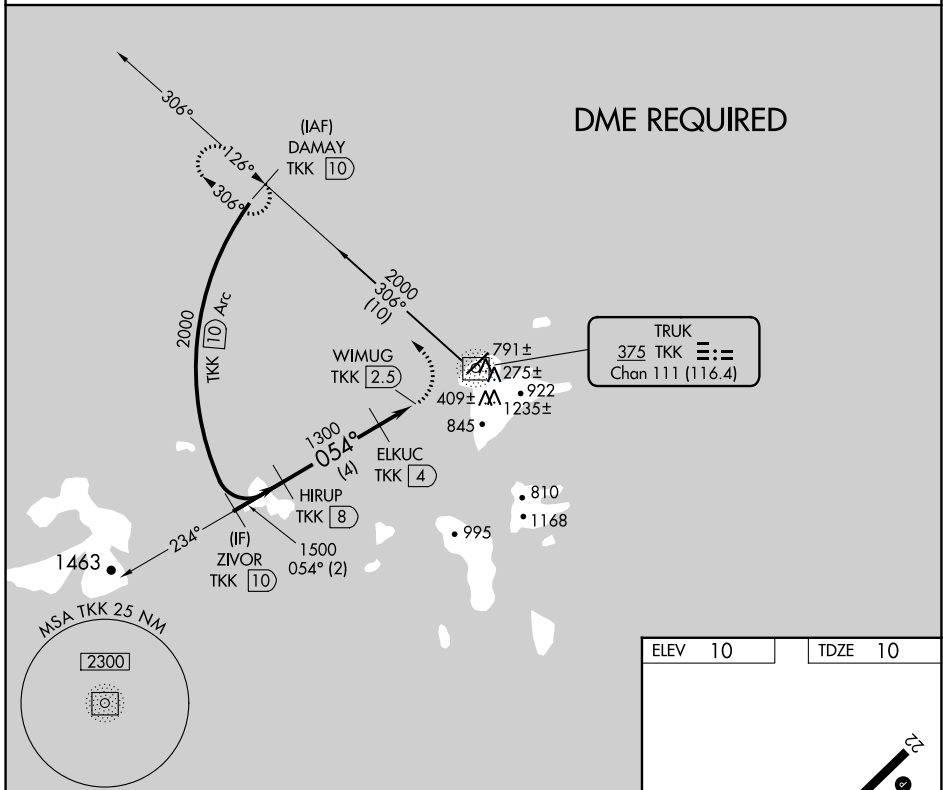
NDB RWY 4

CHUUK INTL (TKK) (PTKK)

- ▼ Obtain local altimeter setting on CTAF; when not received, procedure NA.
- ▲ Circling NA southeast of Rwy 4-22. DME required. No controlled airspace below 5500.

MISSED APPROACH: Climbing left turn to 2000 on TTK NDB/DME bearing 306° to DAMAY/TKK 10 DME and hold.

TRUK RADIO
123.6 (CTAF)



| CATEGORY | A | B | C | D |
|----------|---|--------|--------------|---|
| S-4 | | 720-2½ | 710 (800-2½) | |
| CIRCLING | | 720-2½ | 710 (800-2½) | |