

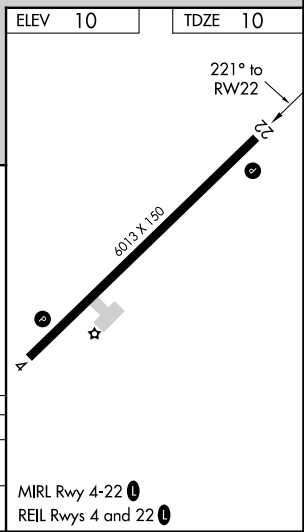
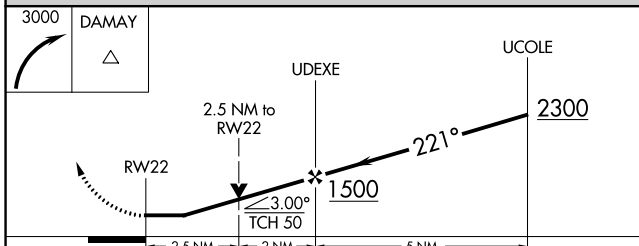
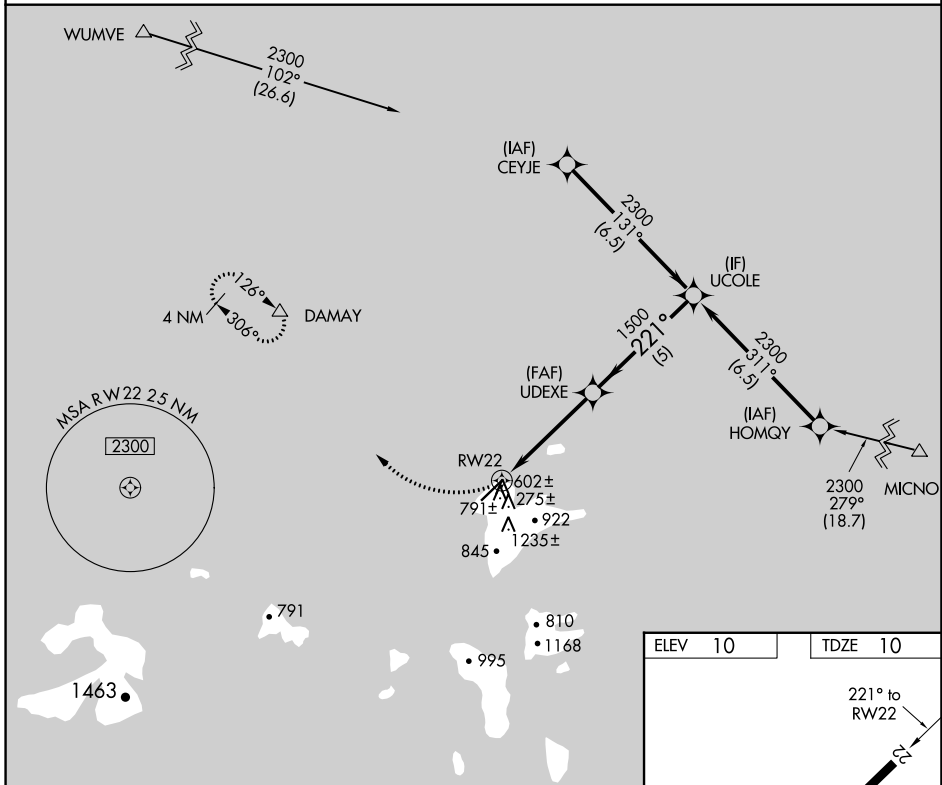
APP CRS	Rwy Idg	<b>6013</b>
<b>221°</b>	TDZE	<b>10</b>
	Apt Elev	<b>10</b>

# RNAV (GPS) RWY 22

CHUUK INTL (TKK) (PTKK)

RNP APCH.	MISSED APPROACH: Climbing right turn to 3000 direct DAMAY and hold.
<p><b>▼</b> Circling NA southeast of Rwy 4-22.</p> <p><b>▲</b> Obtain local altimeter setting on CTAF; when not received, procedure NA. No controlled airspace below 5500.</p>	

TRUK RADIO  
**123.6** (CTAF)



CATEGORY	A	B	C	D
LNVA MDA	860-1 850 (900-1)	860-1¼ 850 (900-1¼)	860-2½ 850 (900-2½)	850 (900-2½)
<b>C</b> CIRCLING	860-1¼ 850 (900-1¼)	860-2¾ 850 (900-2¾)		

PAC: 26 DEC 2024 to 20 FEB 2025

PAC: 26 DEC 2024 to 20 FEB 2025