

APP CRS	Rwy ldg	6013
041°	TDZE	10
	Apt Elev	10

RNAV (GPS) RWY 4

CHUUK INTL (TKK) (PTKK)

RNP APCH.

▼ Obtain local altimeter setting on CTAF; when not received, procedure NA.

▲ Circling NA southeast of Rwy 4-22.

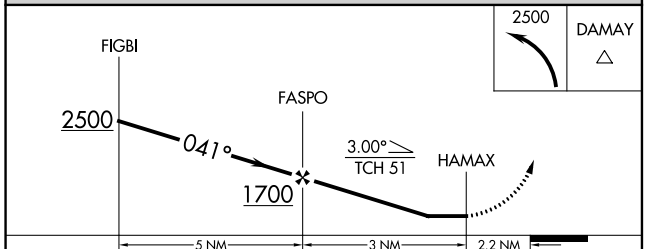
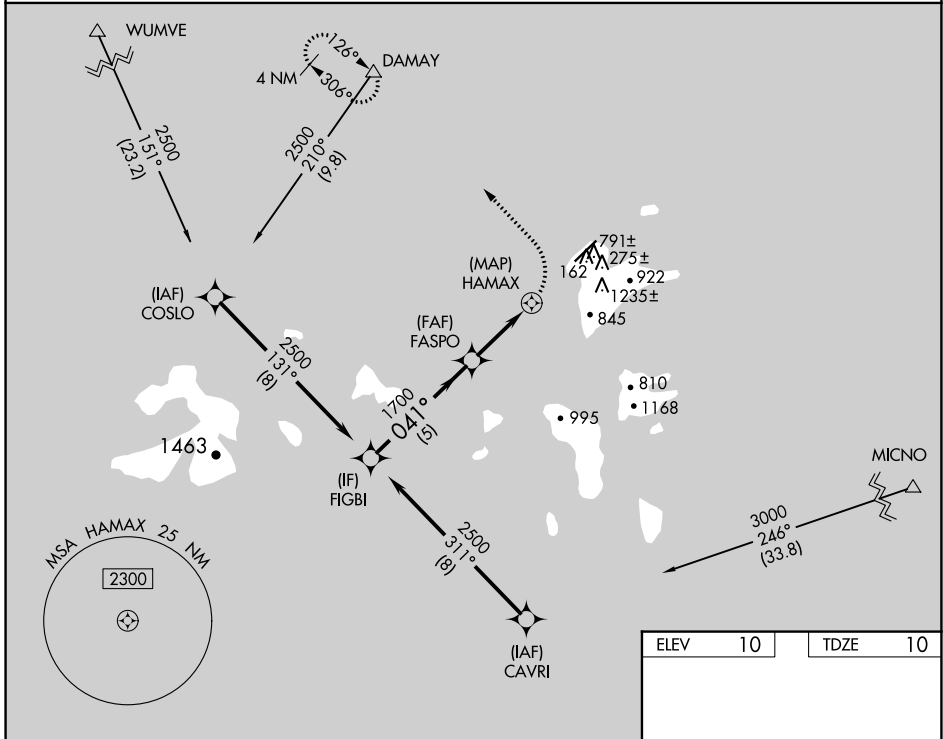
No controlled airspace below 5500.

MISSED APPROACH: Climbing left turn to 2500 direct DAMAY and hold.

* Missed approach requires minimum climb of 375 feet per NM to 960.

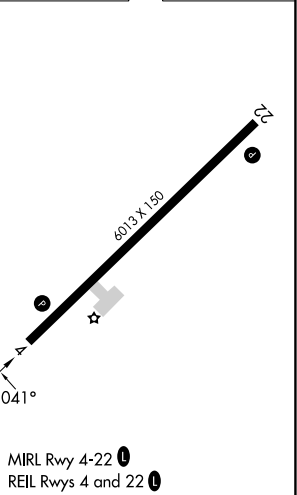
TRUK RADIO

123.6 0 (CTAF)



ELEV	10	TDZE	10
------	----	------	----

CATEGORY	A	B	C	D
LNAV MDA*		420-3	410 (500-3)	
LNAV MDA		620-3	610 (700-3)	
C CIRCLING		620-3	610 (700-3)	



PAC, 26 DEC 2024 to 20 FEB 2025

PAC, 26 DEC 2024 to 20 FEB 2025