

NORTH, SOUTH CAROLINA

# RNAV (GPS) RWY 24

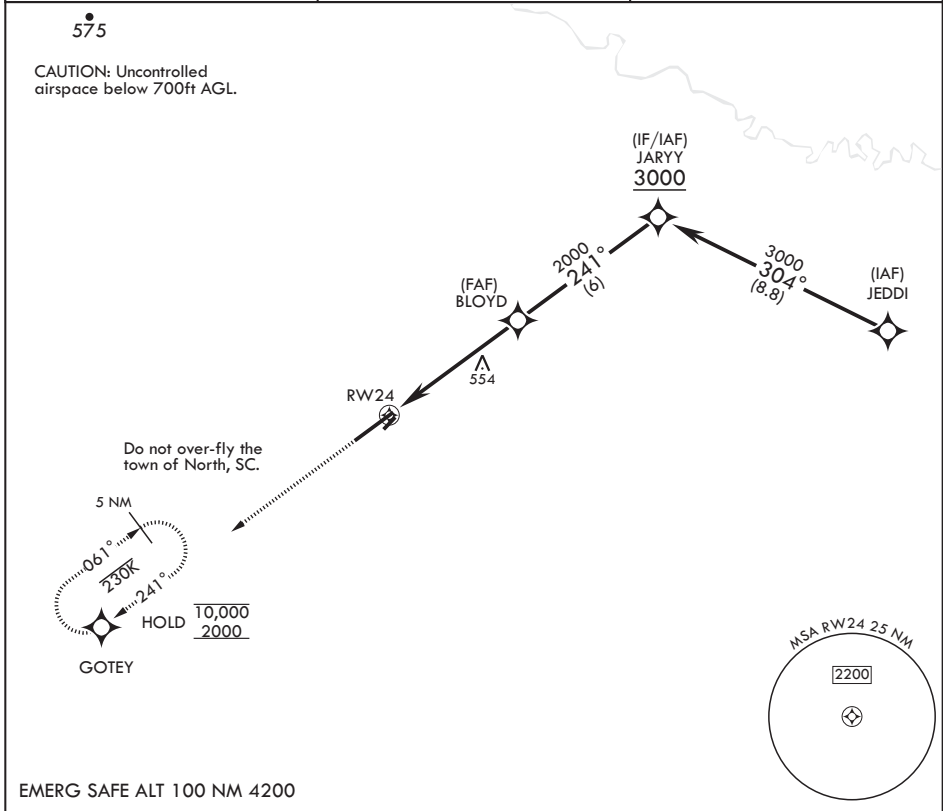
APCH CRS	Rwy Idg	8999
241°	TDZE	316
	Arprt Elev	321

AL-3017 (USAF)

NORTH AF AUX (KXNO)

RNP APCH.	MISSED APPROACH: Climb to 2000 direct GOTEY and hold, continue climb-in-hold to 2000.
▼ * Circling NA to Assault Strip.	

ASOS 118.525	COLUMBIA APP CON/DEP CON 124.15 338.2	LZ/DZ OPS FAC 120.475 235.775
-----------------	--	----------------------------------



EMERG SAFE ALT 100 NM 4200

2000	GOTEY	JARYY	ELEV 321	TDZE 316
↑	⊕		Rwy 6 Idg 9003'	
			Rwy 24 Idg 8999'	

CATEGORY	A	B	C	D	E
LNAV MDA	880-1 564 (600-1)	880-1 564 (600-1%)	880-1 564 (600-1%)	880-1 564 (600-1%)	880-1 564 (600-1%)
☑ CIRCLING*	940-1 619 (700-1)	940-1 619 (700-1%)	940-1 619 (700-1%)	1400-3 1079 (1100-3)	1400-3 1079 (1100-3)

HIRL Rwy 6-24

NORTH, SOUTH CAROLINA

33°37'N - 81°05'W

NORTH AF AUX (KXNO)

Amdt 3 29DEC22

# RNAV (GPS) RWY 24

SE-2, 26 DEC 2024 to 23 JAN 2025

SE-2, 26 DEC 2024 to 23 JAN 2025