

VORTAC CAE 114.70 Chan 94	APCH CRS 186°	Rwy ldg TDZE Arprt Elev N/A N/A 321
---	-------------------------	--

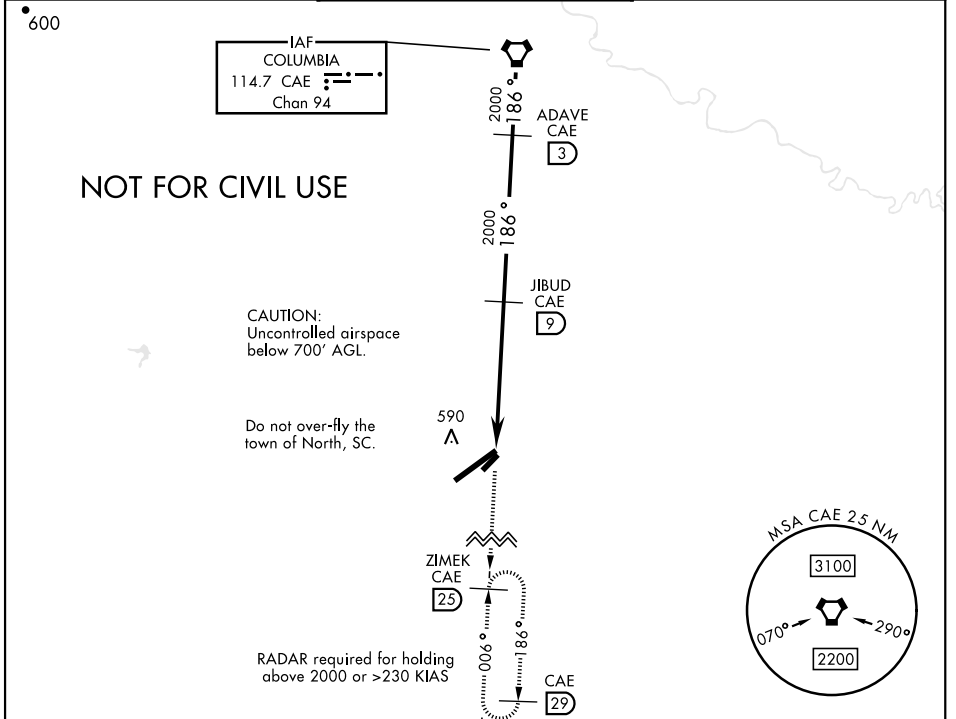
[USAF]

VOR or TACAN A

NORTH AF AUX (KXNO)

V *Circling NA to Assault Strip. MISSED APPROACH: Climb to 2000 via CAE VORTAC R-186 to ZIMEK and hold as published.

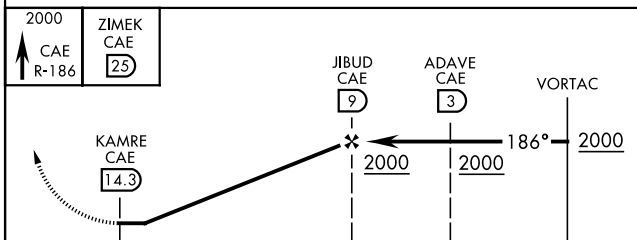
ASOS (KOGB) 118.525	LZ/DZ OPS FACILITY 120.475 0 235.775	COLUMBIA APP CON 124.15 338.2
-------------------------------	--	---



SE-2, 26 DEC 2024 to 23 JAN 2025

SE-2, 26 DEC 2024 to 23 JAN 2025

EMERG SAFE ALT 100 NM 4800



ELEV	321
Rwy 6 ldg	9003'
Rwy 24 ldg	8999'

186°

0.5% up 10,000 x 150

ASSAULT LANDING ZONE 2500 x 70

051

LZ/DZ OPS FACILITY

2231°

CATEGORY	A	B	C	D	E
C CIRCLING *	NOT AUTHORIZED		940-1¾ 619 (700-1¾)	1000-2¼ 679 (700-2¼)	1000-2½ 679 (700-2½)

HIRL Rwy 6-24 0

VOR or TACAN A