

# ILS or LOC/DME RWY 32

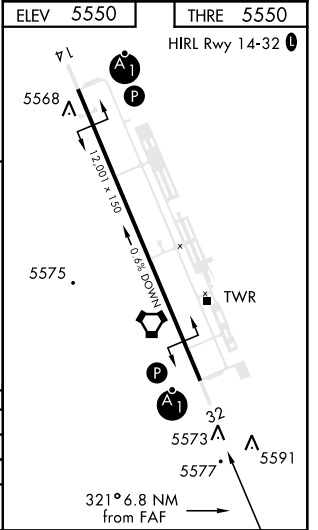
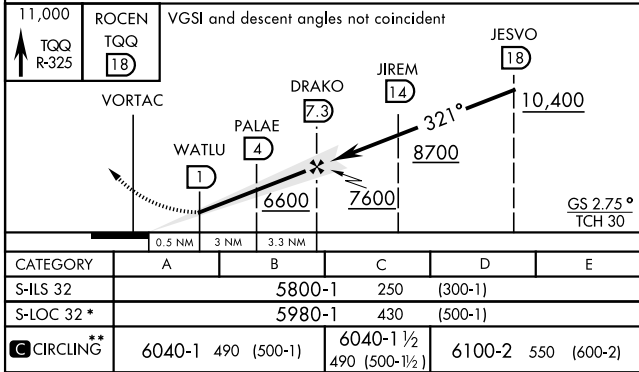
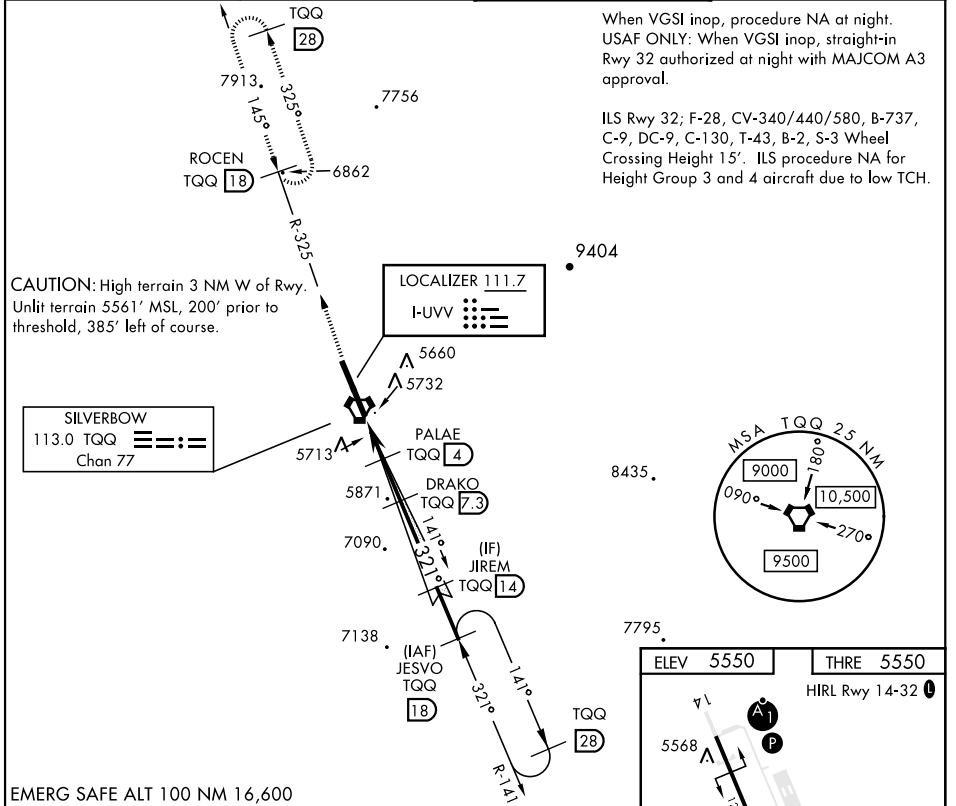
<b>LOC I-UVV</b> <b>111.7</b>	<b>APCH CRS</b> <b>321°</b>	<b>Rwy Ildg</b> <b>THRE</b> <b>Arprt Elev</b> <b>12,001</b> <b>5550</b> <b>5550</b>	<b>AL-3188 [USAF]</b>	<b>TONOPAH TEST RANGE (KTNX)</b>
----------------------------------	--------------------------------	--	-----------------------	----------------------------------

▼ \* When ALS inop, increase CAT CDE vis to 1/4 miles.  
 \*\* Circling not authorized W of Rwy 14-32

ALSF-1

**MISSED APPROACH:** Climb to 11,000 via TQQ VORTAC R-325 to ROCEN and hold, continue climb in hold to 11,000.

<b>AWOS</b> <b>113.0</b>	<b>NELLIS CONTROL</b> <b>119.35 254.4</b>	<b>SILVERBOW TOWER *</b> <b>124.75 257.95</b>	<b>GND CON</b> <b>127.25 335.5</b>
-----------------------------	--	--	---------------------------------------



CATEGORY	A	B	C	D	E
S-ILS 32	5800-1		250 (300-1)		
S-LOC 32*	5980-1		430 (500-1)		
<b>CIRCLING</b> **	6040-1 490 (500-1)	6040-1 1/2 490 (500-1/2)	6100-2 550 (600-2)		

# ILS or LOC/DME RWY 32

SW-4, 26 DEC 2024 to 23 JAN 2025

SW-4, 26 DEC 2024 to 23 JAN 2025