

TONOPAH, NEVADA

RNAV (GPS) RWY 14

APCH CRS	Rwy ldg	12,001
141°	TDZE	5496
	Arprt Elev	5550

AL-3188 [USAF]

TONOPAH TEST RANGE (KTNX)

▼ * When ALS inop, increase CAT AB RVR to 55, vis to 1 mile, CAT CD vis to 1 3/8 miles.
 ** Circling not authorized W of Rwy 14-32.



MISSED APPROACH: Turn left climbing to 11,000 direct JADPU and hold, continue climb-in-hold to 11,000.

AWOS
113.0

NELLIS CONTROL
119.35 254.4

SILVERBOW TOWER *
124.75 257.95

GND CON
127.25 335.5

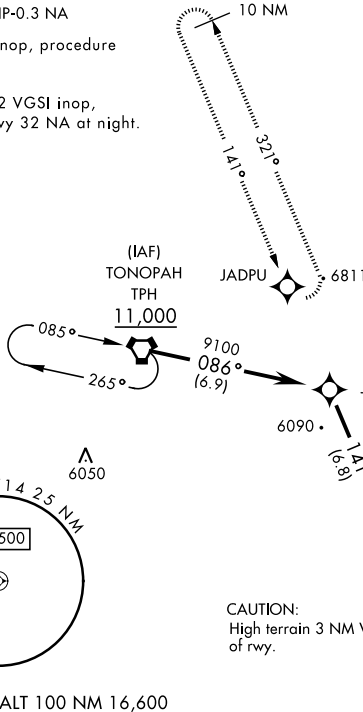
DME/DME RNP-0.3 NA

When VGSI inop, procedure NA at night.

When Rwy 32 VGSI inop, circling to Rwy 32 NA at night.

Unlit terrain 5558' MSL, 200' prior to Rwy 32 threshold, 200' left of centerline. When VGSI inop, procedure NA at night.

USAF ONLY: When Rwy 14 VGSI inop, straight-in Rwy 14 authorized at night with MAJCOM A3 approval.

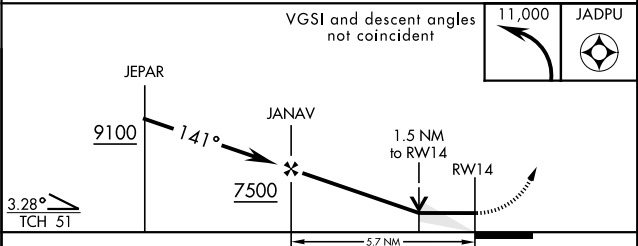
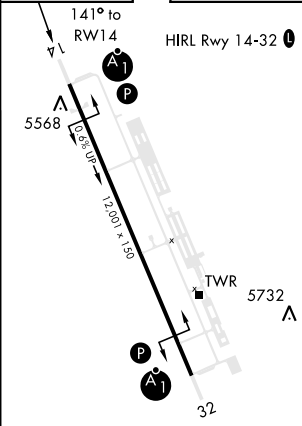


SW-4, 26 DEC 2024 to 23 JAN 2025

SW-4, 26 DEC 2024 to 23 JAN 2025

EMERG SAFE ALT 100 NM 16,600

ELEV	5550	TDZE	5496
------	------	------	------



CATEGORY	A	B	C	D
LNAV MDA *	5960/24 464 (500-1/2)		5960/50 464 (500-1)	
CIRCLING **	6040-1 490 (500-1)		6040-1 1/2 490 (500-1 1/2)	6100-2 550 (600-2)

TONOPAH, NEVADA
Amdt 4 29MAR18

37°47'N-116°47'W

TONOPAH TEST RANGE (KTNX)

RNAV (GPS) RWY 14