

# RNAV (GPS) RWY 5

APCH CRS **050°**  
 Rwy Idg **5018**  
 TDZE **41**  
 Arpt Elev **41**

[USA]

CAMP PEARY LNDG STRIP (KW94)

RNP APCH - GPS

Available Type Unknown

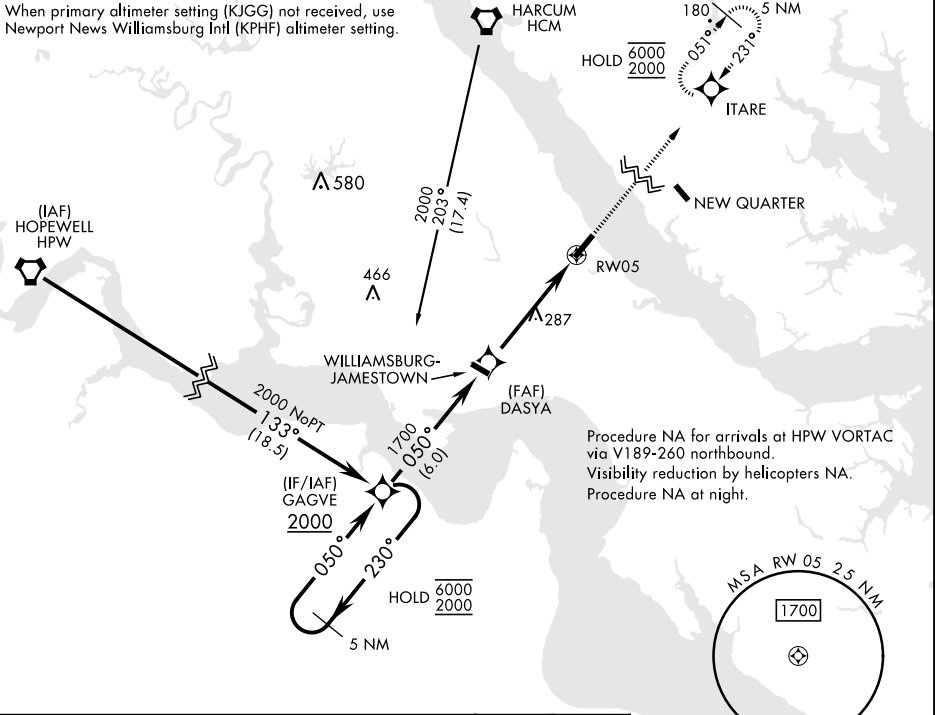
MISSED APPROACH: Climb to 2000 direct ITARE and hold.

▼ Restricted airfield, PPR. Contact Camp Peary Ops prior to landing. Williamsburg Jamestown (KJGG) primary altimeter setting.

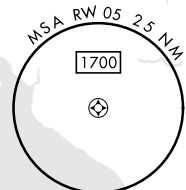
WILLIAMSBURG-JAMESTOWN AWOS-3  
**120.625**

NORFOLK APP CON  
**125.7 335.625**

When primary altimeter setting (KJGG) not received, use Newport News Williamsburg Intl (KPHF) altimeter setting.

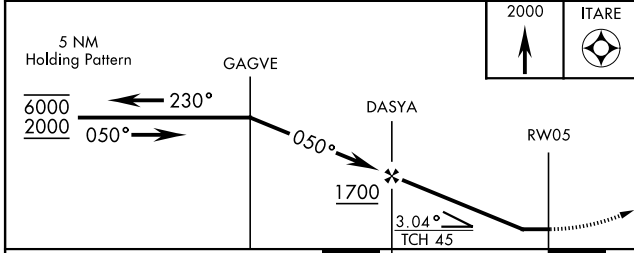


Procedure NA for arrivals at HPW VORTAC via V189-260 northbound.  
 Visibility reduction by helicopters NA.  
 Procedure NA at night.



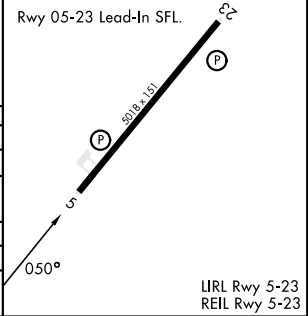
NE-3, 26 DEC 2024 to 23 JAN 2025

NE-3, 26 DEC 2024 to 23 JAN 2025



ELEV 41 | TDZE 41

CATEGORY	A	B	C	D
LNVA MDA	600-1	559 (600-1)	600-1 5/8	559 (600-1 1/4)
CIRCLING	600-1	620-1	620-1 5/8	760-2 1/4
	559 (600-1)	579 (600-1)	579 (600-1 5/8)	719 (800-2 1/4)
NEWPORT NEWS / WILLIAMSBURG INTL ALTIMETER SETTING				
LNVA MDA	640-1	599 (600-1)	640-1 3/4	599 (600-1 3/4)
CIRCLING	640-1	599 (600-1)	640-1 3/4	780-2 1/4
			599 (600-1 3/4)	739 (800-2 1/4)



LRL Rwy 5-23  
 REL Rwy 5-23

# RNAV (GPS) RWY 5