

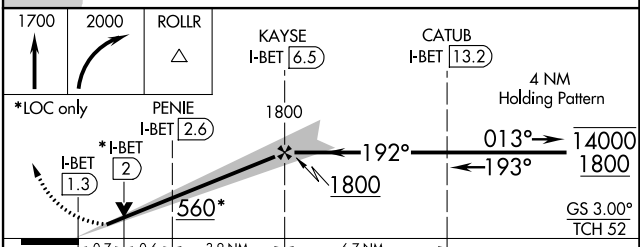
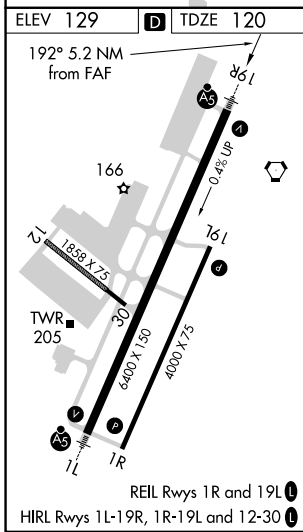
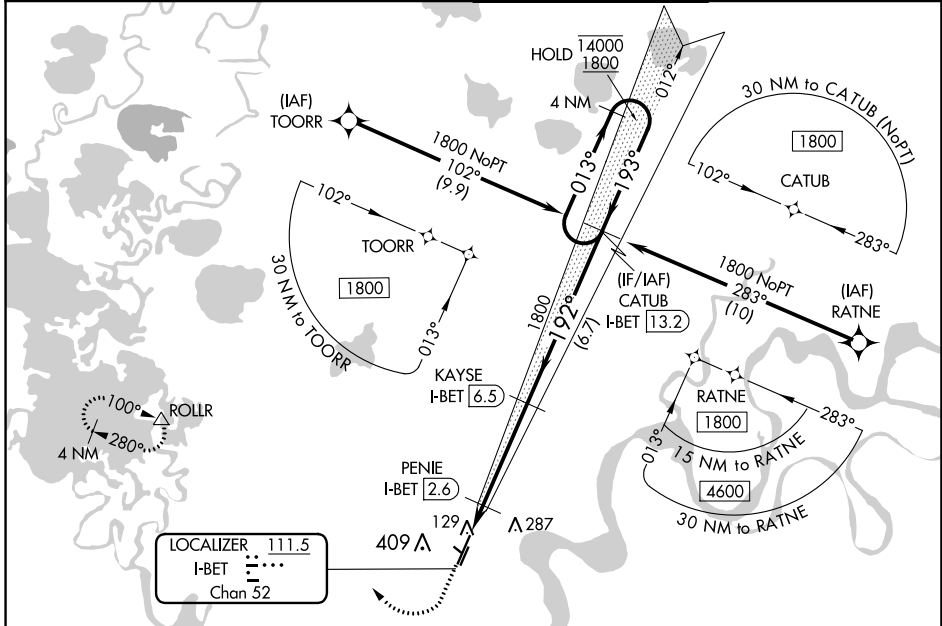
LOC/DME I-BET	APP CRS	Rwy Idg	6400
111.5	192°	TDZE	120
Chan 52		Apt Elev	129

# ILS Y or LOC Y RWY 19R

BETHEL (BET)(PABE)

DME required. RNAV 1-GPS required.		MALSR	MISSED APPROACH: Climb to 1700 then climbing right turn to 2000 direct ROLLR and hold.
⚠ Circling NA west of Rwy 1L-19R. For inop ALS, increase S-LOC-19R Cat C/D visibility to RVR 4000. # RVR 1800 authorized with use of FD or AP or HUD to DA.			

ATIS <b>119.8</b>	ANCHORAGE CENTER <b>125.2 372.0</b>	BETHEL TOWER * <b>118.7 (CTAF) 0</b>	GND CON <b>121.7</b>
----------------------	--	---	-------------------------



CATEGORY	A	B	C	D
S-ILS 19R#	320/24 200 (200-½)			
S-LOC 19R	380/24 260 (300-½)			
<b>C</b> CIRCLING	500-1 371 (400-1)	600-1 471 (500-1)	600-1½ 471 (500-1½)	680-2 551 (600-2)

AK, 26 DEC 2024 to 20 FEB 2025

AK, 26 DEC 2024 to 20 FEB 2025