

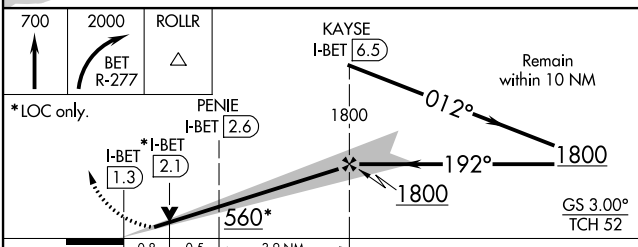
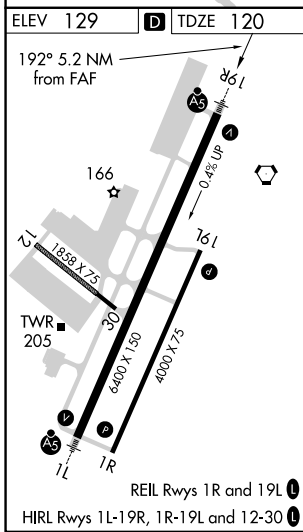
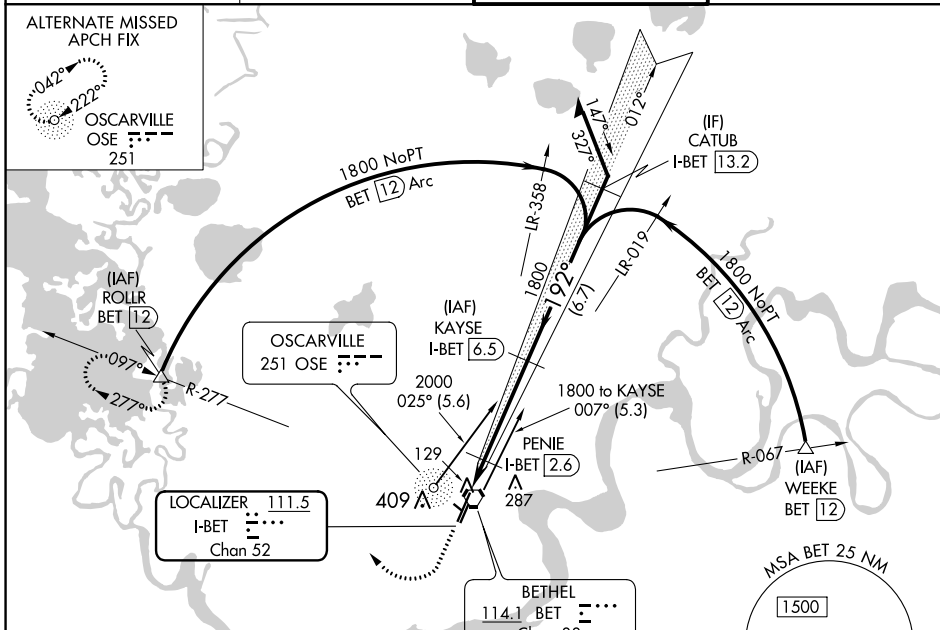
LOC/DME I-BET	APP CRS	Rwy Idg	6400
111.5	192°	TDZE	120
Chan 52		Apt Elev	129

ILS Z or LOC Z RWY 19R

BETHEL (BET)(PABE)

DME required.		MALSR	MISSED APPROACH: Climb to 700 then climbing right turn to 2000 on BET VORTAC R-277 to ROLLR/BET VORTAC 12 DME and hold.
<p>⚠ Circling NA west of Rwy 1L-19R. ⚠ For inop ALS, increase S-LOC Cat C/D visibility to RVR 4500. #RVR 1800 authorized with the use of FD or AP or HUD to DA.</p>			

ATIS 119.8	ANCHORAGE CENTER 125.2 372.0	BETHEL TOWER * 118.7 (CTAF) 0	GND CON 121.7
----------------------	--	--	-------------------------



CATEGORY	A	B	C	D
S-ILS 19R#	320/24 200 (200-½)			
S-LOC 19R	400/24 280 (300-½)			
<input checked="" type="checkbox"/> CIRCLING	500-1 371 (400-1)	600-1 471 (500-1)	600-1½ 471 (500-1½)	680-2 551 (600-2)

AK, 26 DEC 2024 to 20 FEB 2025

AK, 26 DEC 2024 to 20 FEB 2025