

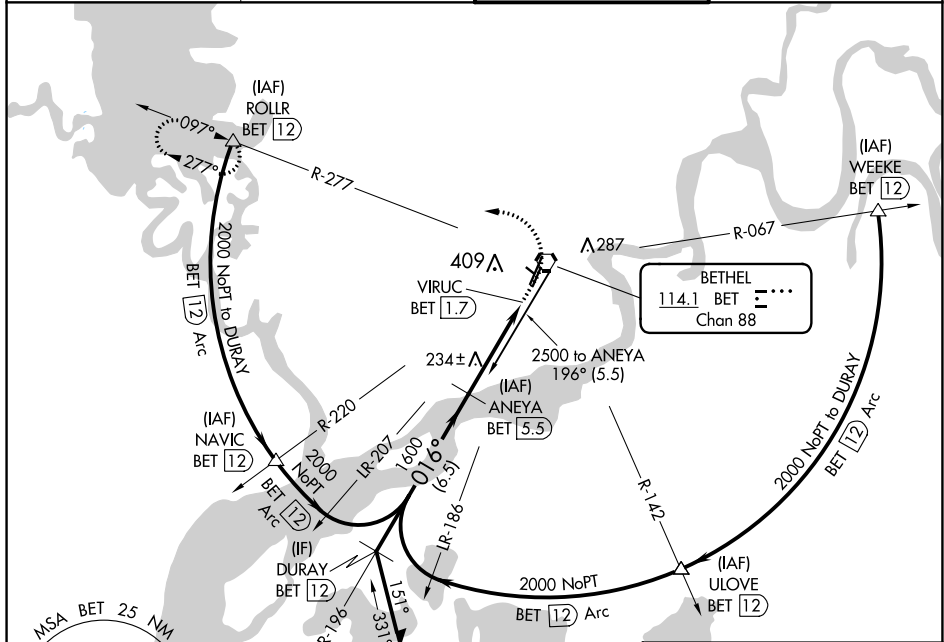
VORTAC BET <b>114.1</b> Chan <b>88</b>	APP CRS <b>016°</b>	Rwy ldg TDZE <b>127</b> Apt Elev <b>129</b>
--	------------------------	---

# VOR RWY 1L

BETHEL (BET)(PABE)

DME required. ▼ Circling NA west of Rwy 1L-19R. For inop ALS, increase S-1L Cat C/D visibility to RVR 5500. ▲	MALSR AS	MISSED APPROACH: Climb to 800 then climbing left turn to 2000 on BET VORTAC R-277 to ROLLR/12 DME and hold.
---	-------------	---

ATIS <b>119.8</b>	ANCHORAGE CENTER <b>125.2 372.0</b>	BETHEL TOWER * <b>118.7 (CTAF) 0</b>	GND CON <b>121.7</b>
----------------------	--	---	-------------------------

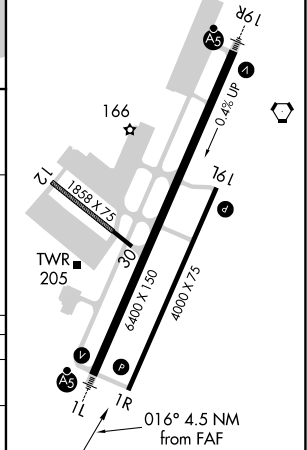


AK, 26 DEC 2024 to 20 FEB 2025

AK, 26 DEC 2024 to 20 FEB 2025



ELEV 129	TDZE 127
HIRL Rws 1L-19R, 1R-19L and 12-30	
REIL Rws 1R and 19L	



Remain within 10 NM	ANEYA BET 5.5	800	2000	ROLLR
1600	1700	▲	BET R-277	△
1600	1600	VIRUC BET 1.7		
	2.98° TCH 47			
	3.8 NM	0.7		

CATEGORY	A	B	C	D
S-1L		500/50	373 (400-1)	
CIRCLING	500-1 371 (400-1)	600-1 471 (500-1)	600-1½ 471 (500-1½)	680-2 551 (600-2)