

WAAS CH 58239 W04A	APP CRS 051°	Rwy Idg TDZE Apt Elev	5001 693 720
--	------------------------	-----------------------------	---

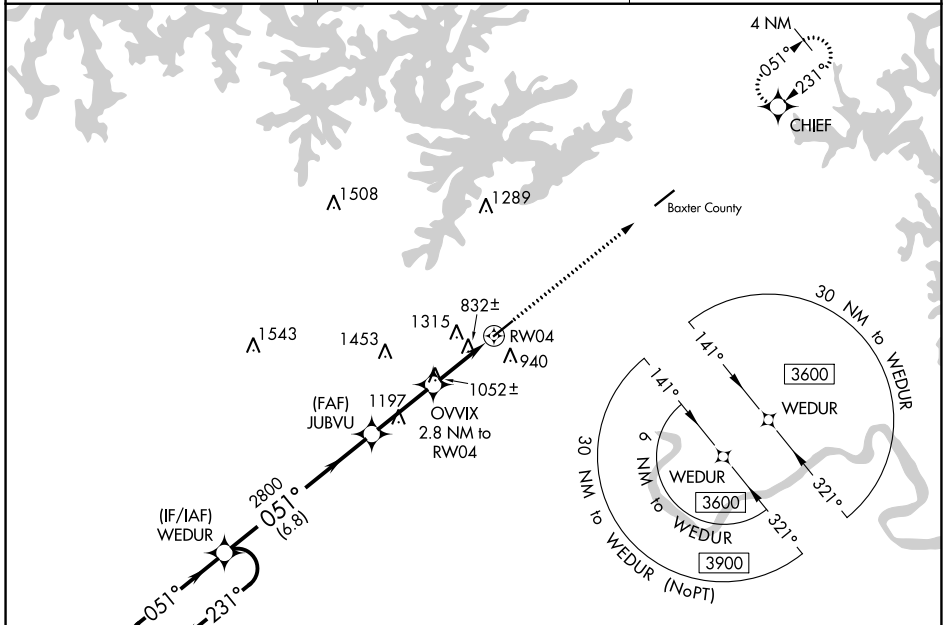
RNAV (GPS) RWY 4

MARION COUNTY RGNL (FLP)

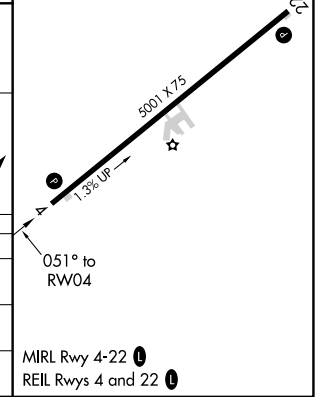
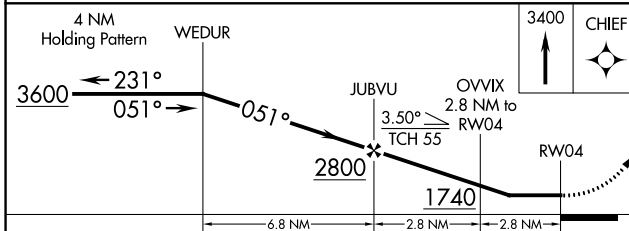
▽ DME/DME RNP-0.3 NA. Procedure NA at night.
▲ Rwy 4 helicopter visibility reduction below 1 SM NA.
 Circling NA northwest of Rwy 4-22.

MISSED APPROACH: Climb to 3400 direct CHIEF and hold.

AWOS-3PT 132.075	MEMPHIS CENTER 126.85 281.55	UNICOM 123.0 (CTAF) ①
----------------------------	--	--



ELEV 720	TDZE 693
-----------------	-----------------



CATEGORY	A	B	C	D
LP MDA	1100-1	407 (400-1)	1100-1 $\frac{3}{8}$ 407 (400-1 $\frac{3}{8}$)	NA
LNAV MDA	1500-1 807 (800-1)	1500-1 $\frac{1}{4}$ 807 (800-1 $\frac{1}{4}$)	1500-2 $\frac{1}{2}$ 807 (800-2 $\frac{1}{2}$)	NA
C CIRCLING	1500-1 780 (800-1)	1500-1 $\frac{1}{4}$ 780 (800-1 $\frac{1}{4}$)	1500-2 $\frac{1}{2}$ 780 (800-2 $\frac{1}{2}$)	NA

MIRL Rwy 4-22 **①**
 REIL Rws 4 and 22 **①**

SC-1, 26 DEC 2024 to 23 JAN 2025

SC-1, 26 DEC 2024 to 23 JAN 2025