


VOR FKL <b>109.6</b>	APP CRS <b>187°</b>	Rwy ldg TDZE <b>1540</b> Apt Elev <b>1540</b>
-------------------------	------------------------	---

# VOR RWY 21

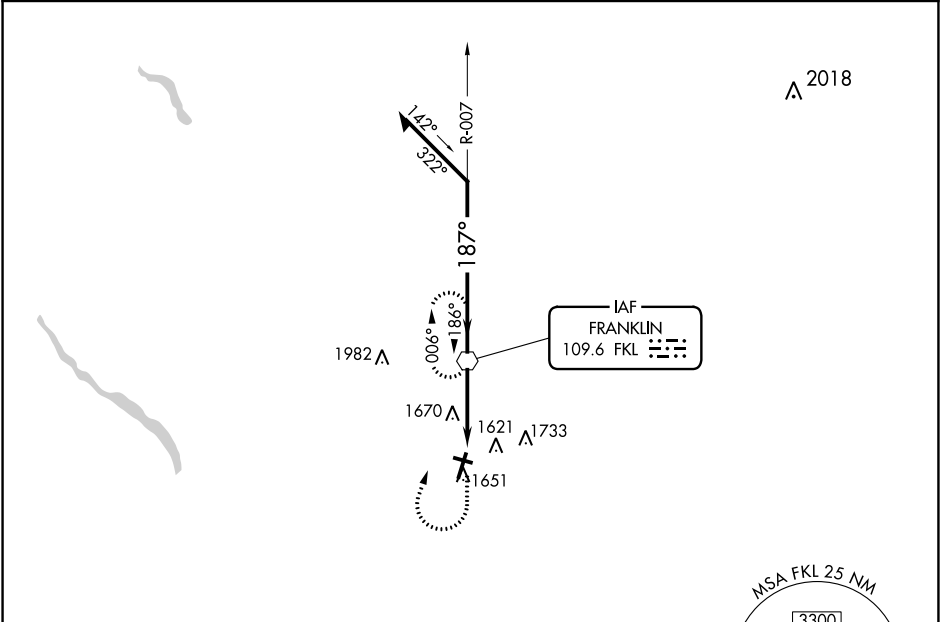
VENANGO RGNL (F'KL)

**⚠** Inop table does not apply. When local altimeter setting not received, use Port Meadville altimeter setting and increase all MDA 80 feet and S-21 Cats C/D visibility 3/8 mile. Circling Rwy 12 NA at night. Rwy 12 helicopter visibility reduction below 1 SM NA.

**MALSR** 

**MISSED APPROACH:** Climb to 2200, then climbing right turn to 3300 direct FKL VOR and hold.

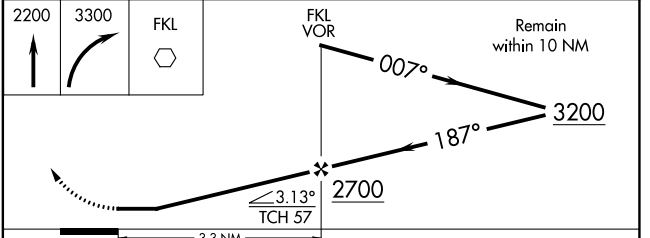
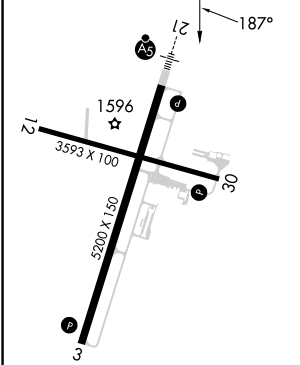
AWOS-3PT <b>118.175</b>	YOUNGSTOWN APP CON ★ <b>126.25 322.3</b>	CLNC DEL <b>126.25</b>	UNICOM <b>122.7</b> (CTAF) <b>📻</b>
----------------------------	---	---------------------------	--



NE-4, 26 DEC 2024 to 23 JAN 2025

NE-4, 26 DEC 2024 to 23 JAN 2025

ELEV 1540	<b>D</b>	TDZE 1540
-----------	----------	-----------



CATEGORY	A	B	C	D
S-21	1920-1 380 (400-1)			
CIRCLING	1960-1 420 (500-1)	2000-1 460 (500-1)	2040-1½ 500 (500-1½)	2100-2 560 (600-2)