

(HMLTN9.HMLTN) 24137

HAMILTON NINE DEPARTURE

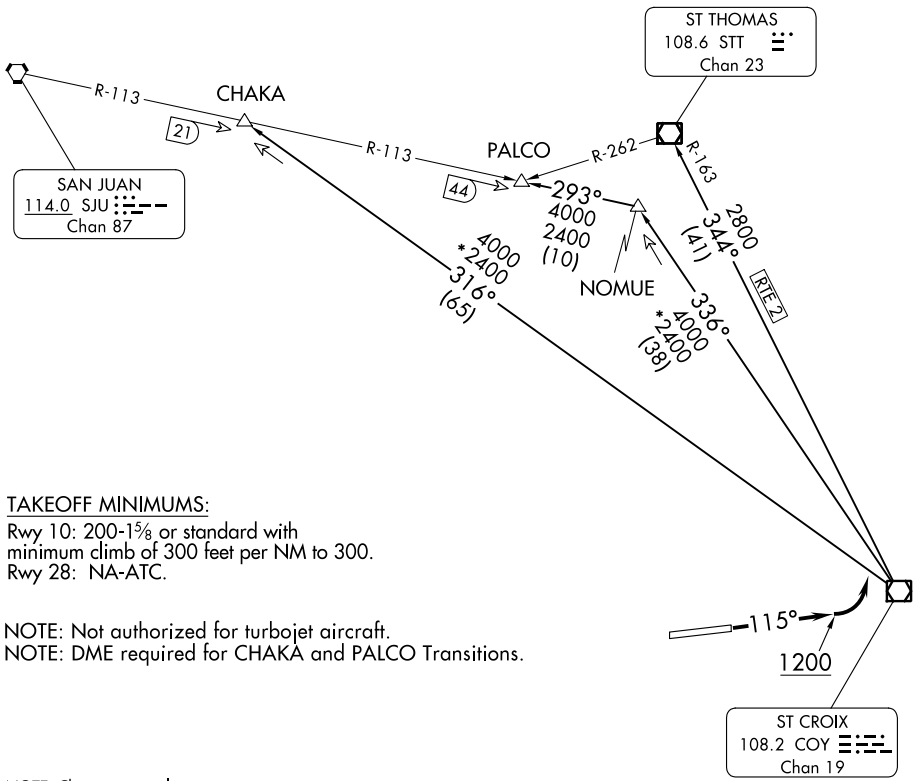
AL-5008 (FAA)

HENRY E ROHLSSEN (STX)(TISX)

CHRISTIANSTED, ST. CROIX, VIRGIN ISLANDS

SAN JUAN CERAP DEP CON
128.65 279.6
ATIS 135.65
GND CON
121.7
ST CROIX TOWER *
118.6 239.3

**TOP ALTITUDE:
6000**



TAKEOFF MINIMUMS:

Rwy 10: 200-1 $\frac{1}{8}$ or standard with minimum climb of 300 feet per NM to 300.
Rwy 28: NA-ATC.

NOTE: Not authorized for turbojet aircraft.
NOTE: DME required for CHAKA and PALCO Transitions.

NOTE: Chart not to scale.

DEPARTURE ROUTE DESCRIPTION

TAKEOFF RUNWAY 10: Climb on heading 115° to 1200, then climbing left turn to intercept assigned transition. Maintain 6000 or ATC assigned altitude. Expect further clearance to filed altitude within ten (10) minutes after departure.

CHAKA TRANSITION (HMLTN9.CHAKA): From over COY VOR/DME on COY R-316 to CHAKA/SJU 21 DME.

PALCO TRANSITION (HMLTN9.PALCO): From over COY VOR/DME on COY R-336 to NOMUE/COY 38 DME, then on SJU R-113 to PALCO INT/SJU 44 DME.

ST THOMAS TRANSITION (HMLTN9.STT): From over COY VOR/DME on COY R-344 and STT R-163 to STT VOR/DME.

HAMILTON NINE DEPARTURE
(HMLTN9.HMLTN) 24MAR22

CHRISTIANSTED, ST. CROIX, VIRGIN ISLANDS
HENRY E ROHLSSEN (STX)(TISX)

SE-3, 26 DEC 2024 to 23 JAN 2025

SE-3, 26 DEC 2024 to 23 JAN 2025