

LOC I-AVA <b>111.3</b>	APCH CRS <b>177°</b>	Rwy Idg <b>12,351</b> TDZE <b>900</b> Arprt Elev <b>911</b>
---------------------------	-------------------------	--

[USAF]

RADAR or DME required.



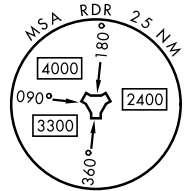
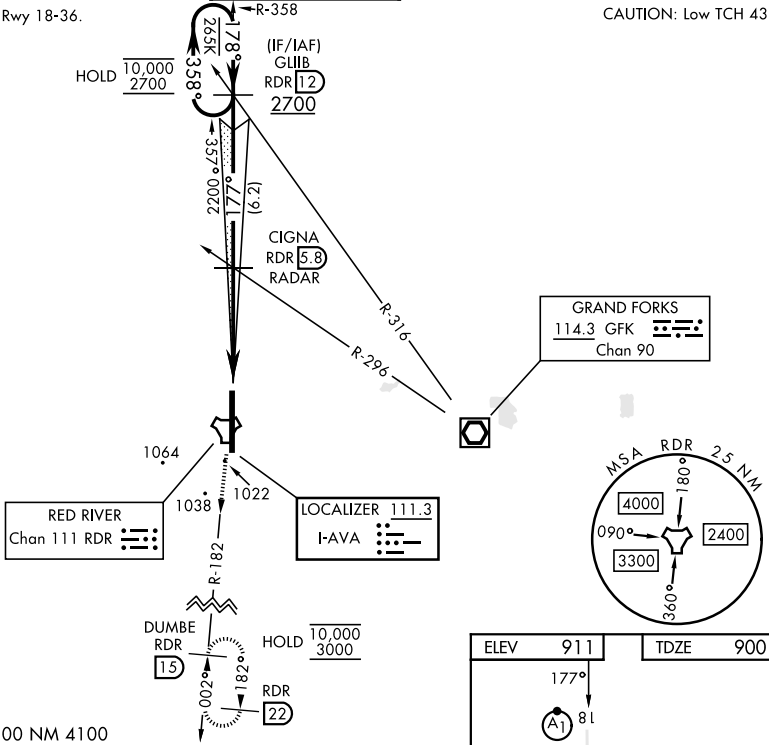
MISSED APPROACH: Climb to 3000 on RDR TACAN R-182 to DUMBE and hold.

\* When ALS inop, increase RVR to 40 and vis to 3/4 mile.  
\*\* When ALS inop, increase CAT AB RVR to 55 and vis to 1 mile; CAT CDE vis to 1 1/4 miles.

ATIS <b>273.45</b>	APP CON <b>118.1 318.1</b>	RED RIVER TOWER <b>124.9 349.0</b>	GND CON <b>119.15 275.8</b>	CLNC DEL <b>119.15 360.7</b>
-----------------------	-------------------------------	---------------------------------------	--------------------------------	---------------------------------

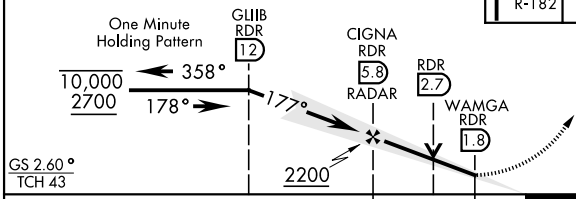
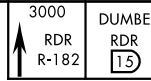
\*\*\*Circling NA E of Rwy 18-36.

CAUTION: Low TCH 43



1339  
EMERG SAFE ALT 100 NM 4100

VGSI and ILS glidepath not coincident (VGSI Angle 2.60/TCH 48).



ELEV 911	TDZE 900
177°	81
12,351 x 150	TWR
36	A1
HIRL Rwy 18-36	
FAF to MAP 4.1 NM	
Knots	60 90 120 150 180
Min:Sec	4:06 2:44 2:03 1:38 1:22

NC-1, 26 DEC 2024 to 23 JAN 2025

NC-1, 26 DEC 2024 to 23 JAN 2025