

GRAND FORKS, NORTH DAKOTA

RNAV (GPS) RWY 18

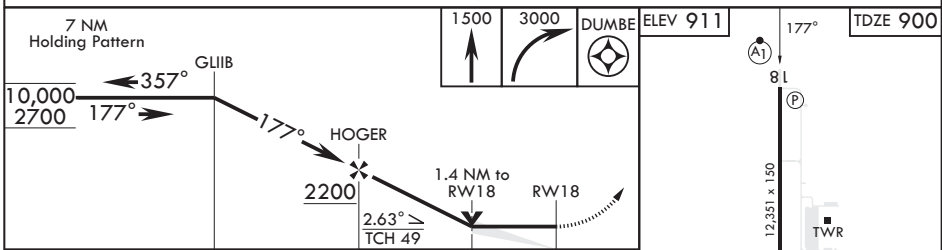
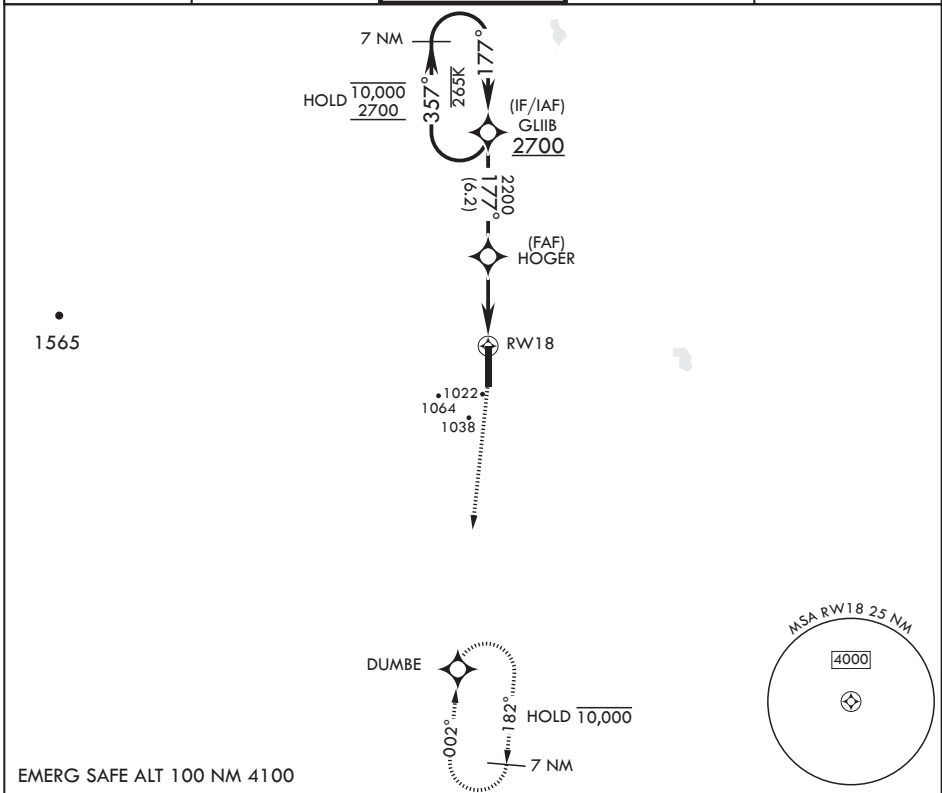
APCH CRS 177°	Rwy Idg TDZE Arprt Elev	12,351 900 911
-------------------------	-------------------------------	---

AL-5010 (USAF)

GRAND FORKS AFB (KRDR)

RNP APCH-GPS	ALSF-1	MISSED APPROACH: Climb to 1500 then climbing right turn to 3000 direct DUMBE and hold.
* When ALS inop, increase CAT AB RVR to 55, vis to 1 mile; CAT CDE vis to 1 1/4 miles. ** Circling E of Rwy 18-36 not authorized.		

ATIS 273.45	APP CON 118.1 318.1	RED RIVER TOWER 124.9 349.0	GND CON 119.15 275.8	CLNC DEL 119.15 360.7
-----------------------	-------------------------------	---------------------------------------	--------------------------------	---------------------------------



CATEGORY	A	B	C	D	E
LNVA MDA*	1340/24 440 (500-½)	1380-1 469 (500-1)	1340/40 440 (500-1½)	1540-2 629 (700-2)	1560-2¼ 649 (700-2¼)
CIRCLING**	1340-1 429 (500-1)	1380-1 469 (500-1)	1380-1½ 469 (500-1½)	1540-2 629 (700-2)	1560-2¼ 649 (700-2¼)

HIRL all Rwys

GRAND FORKS, NORTH DAKOTA

47°58'N - 97°24'W

GRAND FORKS AFB (KRDR)

Orig 10AUG23

RNAV (GPS) RWY 18

NC-1, 26 DEC 2024 to 23 JAN 2025

NC-1, 26 DEC 2024 to 23 JAN 2025