

MINOT, NORTH DAKOTA

HI-TACAN Z RWY 30

TACAN MIB Chan 96	APCH CRS 292°	Rwy Idg 13,198 TDZE 1646 Arprt Elev 1666
----------------------	------------------	--

[USAF]

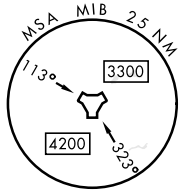
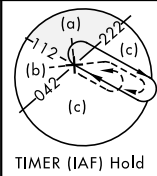
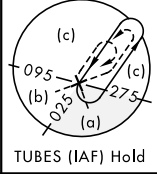
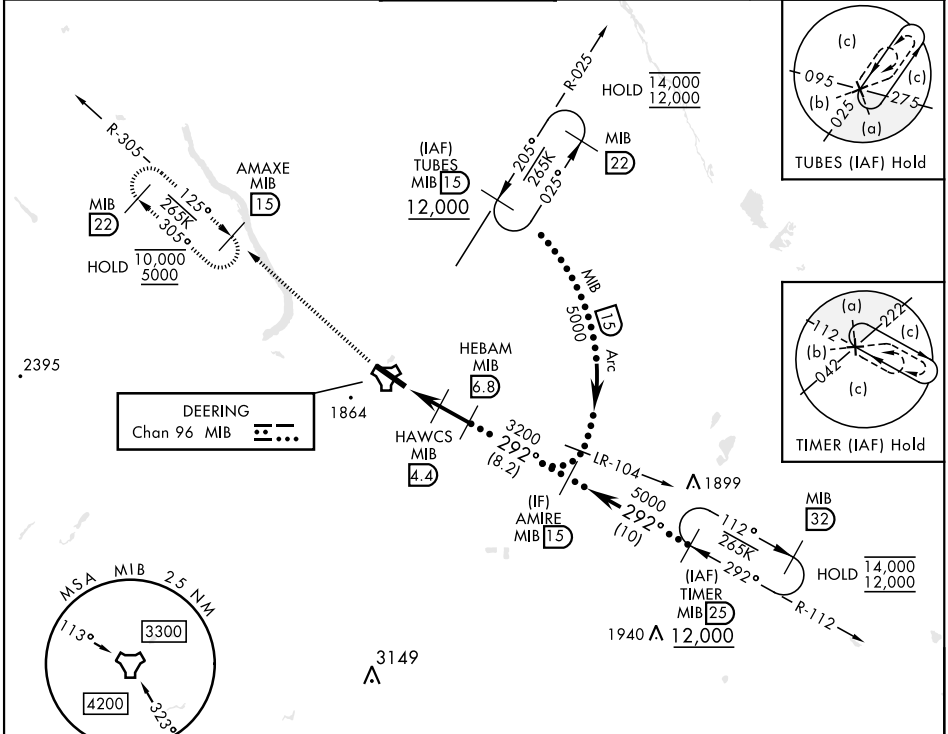
MINOT AFB (KMIB)

* When ALS inop, increase CAT CDE vis to 1 1/2 miles.
 ** Circling not authorized N of Rwy 12-30.

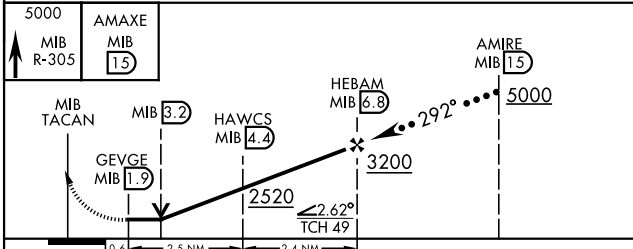


MISSED APPROACH: Climb to 5000 via
 MIB TACAN R-305 direct AMAXE and hold.

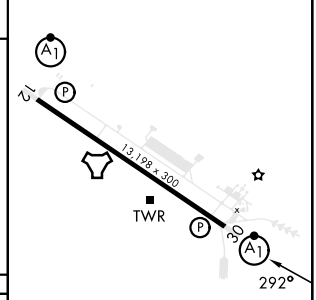
ATIS ★ 278.8	MINOT APP CON 119.6 363.8	MINOT TOWER ★ 120.65 253.5	GND CON 134.0 275.8	CLNC DEL 326.2
-----------------	------------------------------	-------------------------------	------------------------	-------------------



EMERG SAFE ALT 100 NM 4700



ELEV 1666	TDZE 1646
-----------	-----------



CATEGORY	C	D	E
S-30 *	2100/45	454 (500-7/8)	
CIRCLING **	2180-1 1/2 514 (600-1 1/2)	2320-2 654 (700-2)	2320-2 1/4 654 (700-2 1/4)

HIRL Rwy 12-30

MINOT, NORTH DAKOTA
 Amdt 1 16MAY24

48°25'N-101°21'W

MINOT AFB (KMIB)

HI-TACAN Z RWY 30

NC-1, 26 DEC 2024 to 23 JAN 2025

NC-1, 26 DEC 2024 to 23 JAN 2025