

MINOT, NORTH DAKOTA

# RNAV (GPS) Y RWY 30

WAAS CH <b>47084</b> <b>W30B</b>	APCH CRS <b>298°</b>	Rwy ldg TDZE Arprt Elev	<b>13,198</b> <b>1646</b> <b>1666</b>
--	-------------------------	-------------------------------	---

AL-5013 (USAF)

MINOT AFB (KMIB)

RNP APCH - GPS

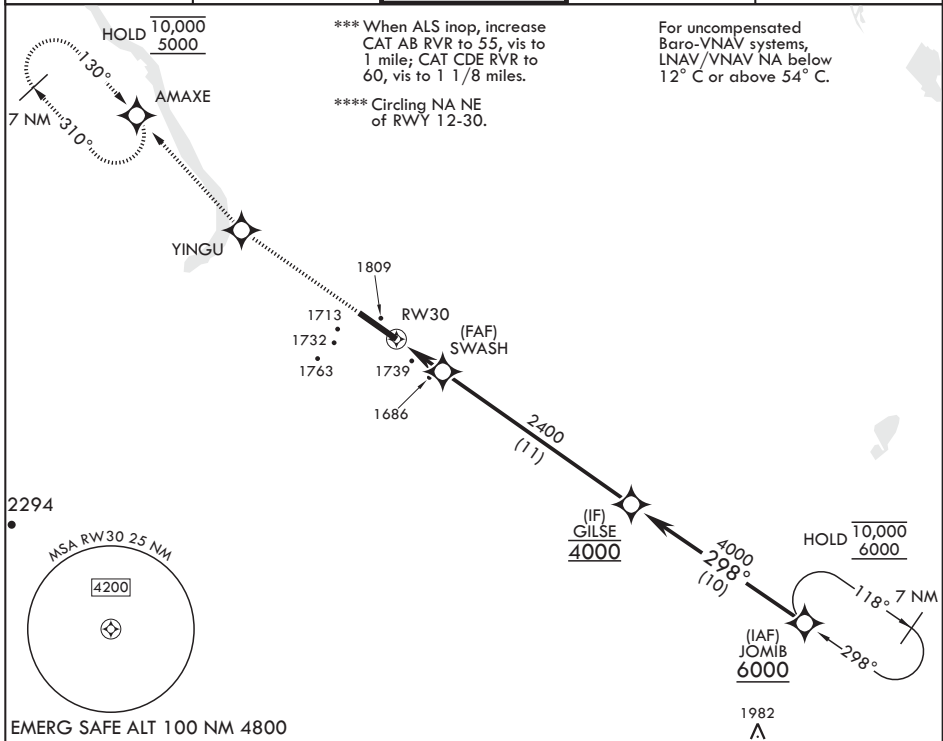
▼ \* When ALS inop, increase RVR to 40, vis to 3/4 mile.  
\*\* When ALS inop, increase RVR to 60, vis to 1 1/8 miles.

ALSF-1

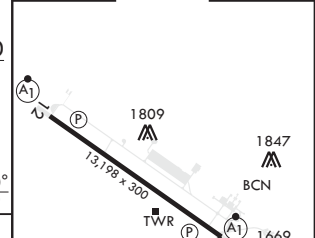
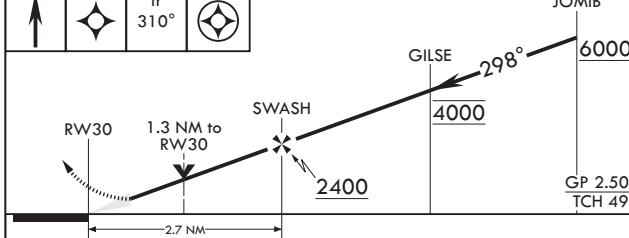


MISSED APPROACH: Climb to 5000 direct YINGU, track 310° to AMAXE and hold.

ATIS* <b>278.8</b>	APP CON <b>119.6 363.8</b>	TOWER* <b>120.65 253.5</b>	GND CON <b>134.0 275.8</b>	CLNC DEL <b>326.2</b>
-----------------------	-------------------------------	-------------------------------	-------------------------------	--------------------------



5000	YINGU	tr 310°	AMAXE	JOMIB	ELEV 1666	TDZE 1646
------	-------	---------	-------	-------	-----------	-----------



CATEGORY	A	B	C	D	E
LPV DA*	1846/24		200	(200-1/2)	
LNAV/VNAV DA**	2027/35		381	(400-5/8)	
LNAV MDA***	2040/24 394 (400-1/2)		2040/40	394 (400-3/4)	
CIRCLING****	2120-1	2140-1	2180-1 1/2	2320-2	2320-2 1/4
	454	474	514	654	654
	(500-1)	(500-1)	(600-1 1/2)	(700-2)	(700-2 1/4)



MINOT, NORTH DAKOTA

48°25'N - 101°21'W

MINOT AFB (KMIB)

Orig 15JUN23

# RNAV (GPS) Y RWY 30

NC-1, 26 DEC 2024 to 23 JAN 2025

NC-1, 26 DEC 2024 to 23 JAN 2025