

LOC/DME I-TUT 110.3 Chan 40	APP CRS 046°	Rwy Idg TDZE Apt Elev	8200 29 31
---	------------------------	-----------------------------	---------------------------------------

ILS or LOC RWY 5

PAGO PAGO INTL (PPG) (NSTU)

DME required.		MALSR	MISSED APPROACH: Climb to 1100 then climbing right turn to 3000 on TUT VORTAC R-087 to CELIM/TUT 10 DME and hold, continue climb-in-hold to 3000.
<p>▼ Circling NA northwest of Rwy 5-23. Rwy 5 helicopter visibility reduction below 3/4 SM NA. For inop ALS, increase S-ILS 5 all Cats visibility to 2 1/2 SM; increase S-LOC 5 Cat A visibility to 1 SM and Cats C/D to 2 SM.</p>			

AWOS-3PT 127.925	FALEOLO APP CON 118.1 6.553(HF)	CTAF 122.9	118.3
----------------------------	---	----------------------	--------------

ALTERNATE MISSED APCH FIX

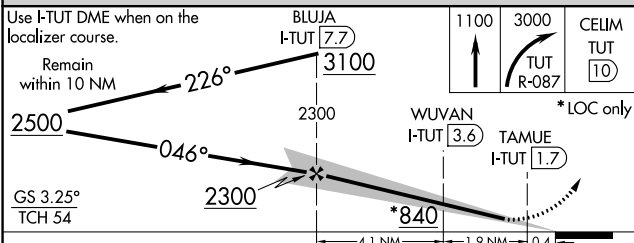
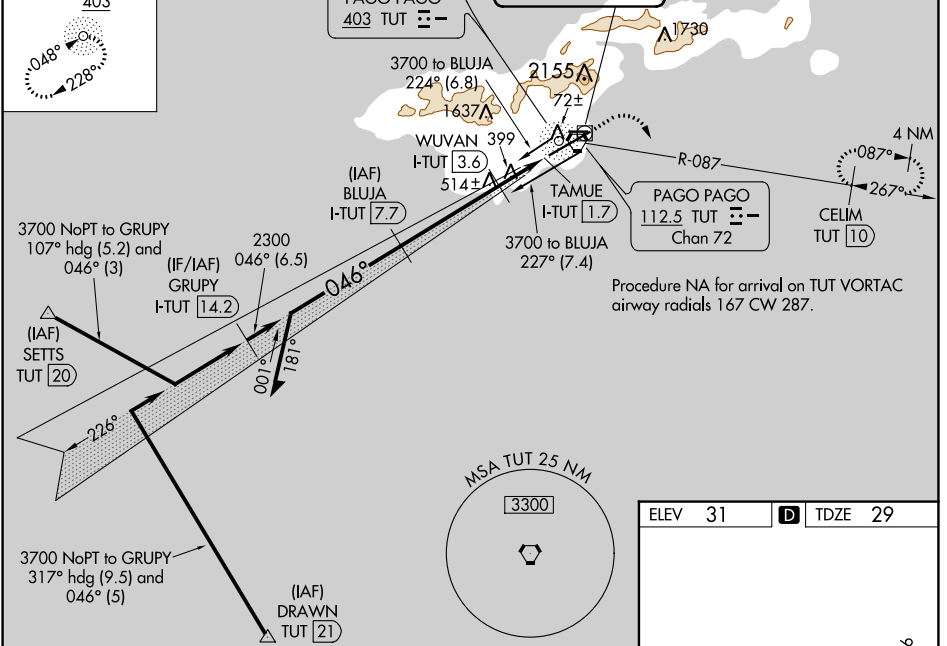
PAGO PAGO
TUT **403**

048°
228°

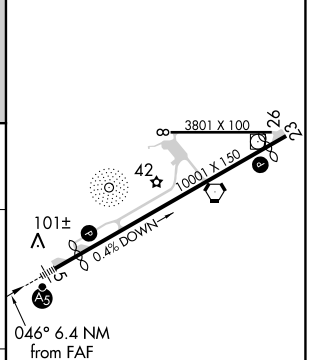
Procedure NA for arrivals at TUT NDB on bearing 344 CW 104.

LOCALIZER
I-TUT **110.3**
Chan **40**
LOC offset 1.69°

PAGO PAGO
403 TUT **403**



ELEV 31	D TDZE 29
---------	------------------



CATEGORY	A	B	C	D
S-ILS 5	841-1 7/8 812 (900-1 7/8)			
S-LOC 5	780-3/4 751 (800-3/4)	780-1 3/4 751 (800-1 3/4)		
C CIRCLING	780-1 749 (800-1)	780-1 1/4 749 (800-1 1/4)	820-2 1/2 789 (800-2 1/2)	860-2 3/4 829 (900-2 3/4)

HIRL Rwy 5-23 and 8-26