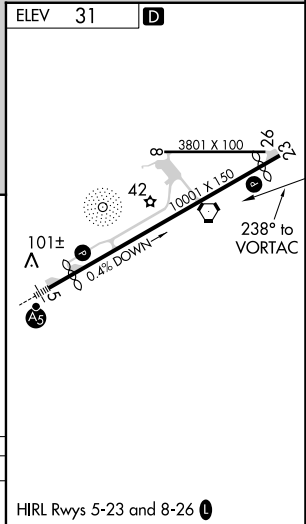
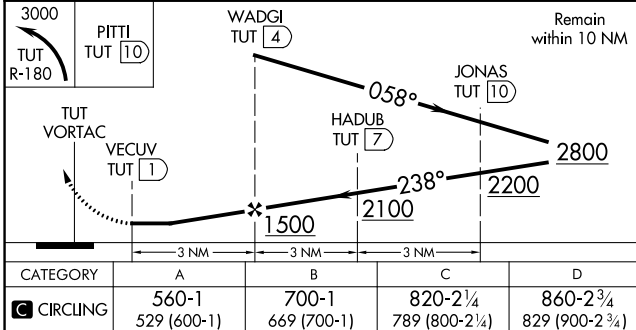
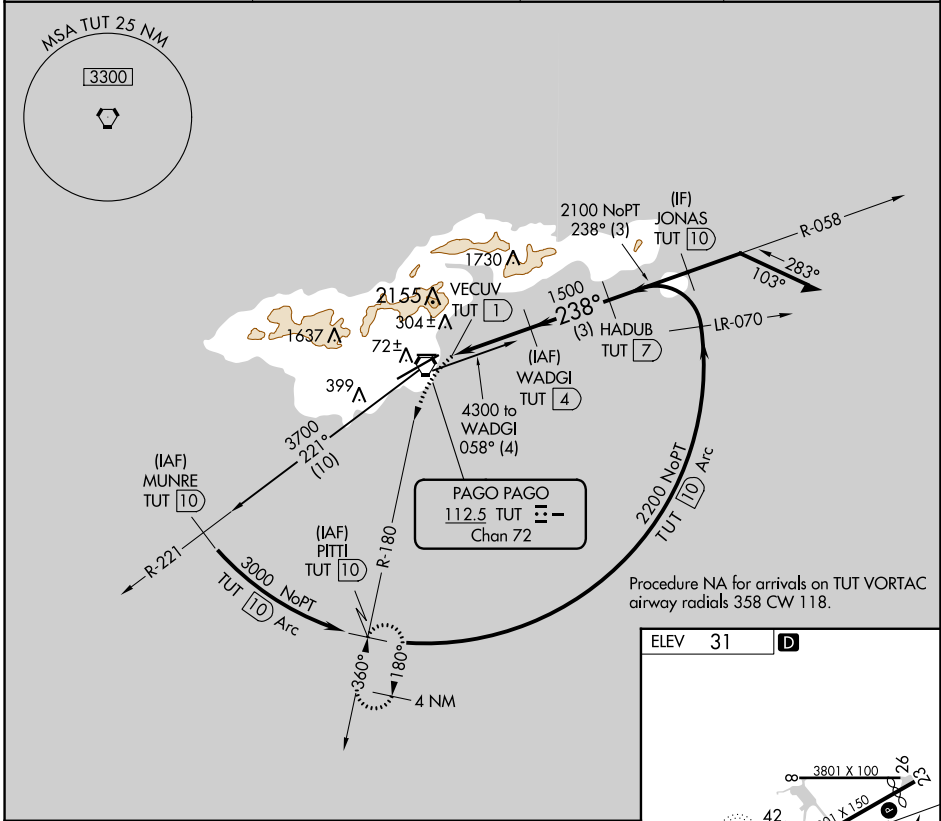


VORTAC TUT 112.5 Chan 72	APP CRS 238°	Rwy Idg TDZE Apt Elev	N/A N/A 31
---------------------------------------	------------------------	-----------------------------	---------------------------------------

VOR or TACAN-B
PAGO PAGO INTL (PPG) (NSTU)

DME required.		MISSED APPROACH: Climbing left turn to 3000 on TUT VORTAC R-180 to PITTI/10 DME and hold, continue climb-in-hold to 3000.	
Circling NA northwest of Rwy 5-23.			
AWOS-3PT 127.925	FALEOLO APP CON 118.1 6.553(HF)	CTAF 122.9	118.3 0



PAC, 26 DEC 2024 to 20 FEB 2025

PAC, 26 DEC 2024 to 20 FEB 2025