

PIQUA, OHIO

AL-5022 (FAA)

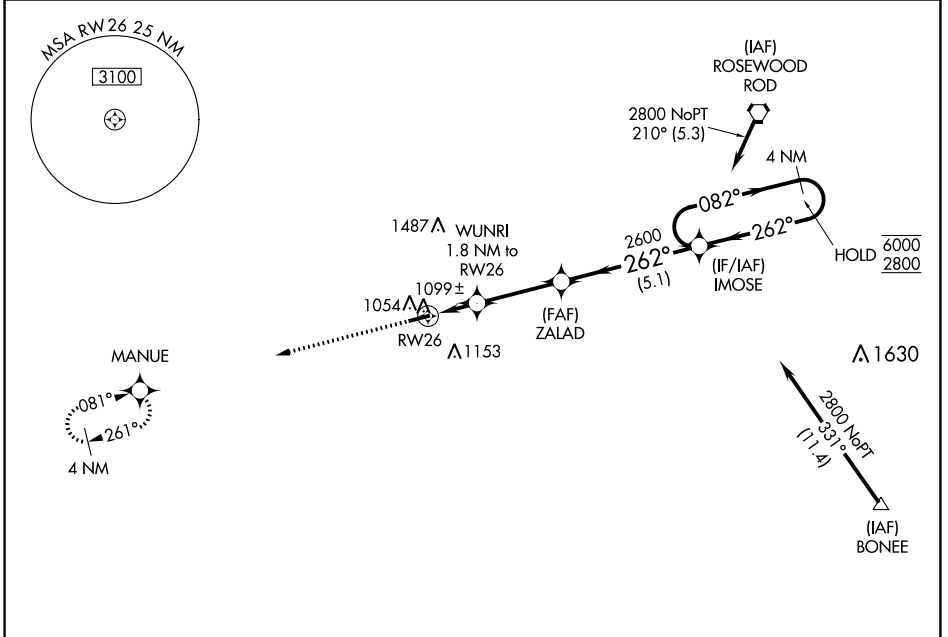
24137

WAAS CH <b>86745</b> <b>W26A</b>	APP CRS <b>262°</b>	Rwy Idg <b>3998</b> TDZE <b>986</b> Apt Elev <b>993</b>
--	------------------------	---

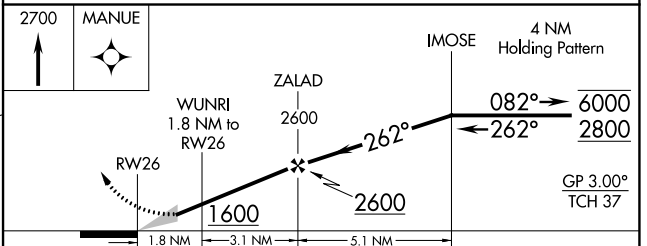
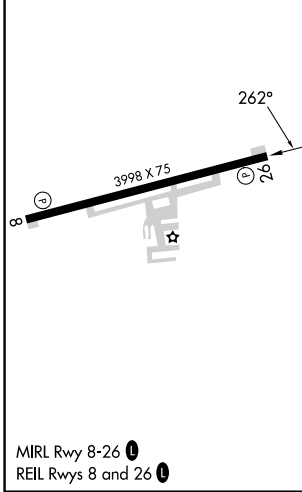
# RNAV (GPS) RWY 26

PIQUA/HARTZELL FLD (I17)

RNP APCH - GPS.		MISSED APPROACH: Climb to 2700 direct MANUE and hold.	
Baro-VNAV NA. Use Versailles altimeter setting.			
DAY ASOS <b>125.8</b>	VES AWOS-3T <b>125.9</b>	COLUMBUS APP CON <b>134.45 294.5 352.05</b>	UNICOM <b>123.0</b> (CTAF)



ELEV 993	TDZE 986
----------	----------



	CATEGORY	A	B	C	D
LPV	DA	1213-1 227 (300-1)		NA	
LNAV/VNAV	DA	1296-1 310 (400-1)		NA	
LNAV	MDA	1380-1	394 (400-1)	1380-1½ 394 (400-1½)	NA
	CIRCLING	1440-1 447 (500-1)	1540-1 547 (600-1)	1560-1½ 567 (600-1½)	NA

PIQUA, OHIO  
Amdt 1A 07SEP23

40°10'N-84°19'W

# RNAV (GPS) RWY 26

EC-2, 26 DEC 2024 to 23 JAN 2025

EC-2, 26 DEC 2024 to 23 JAN 2025