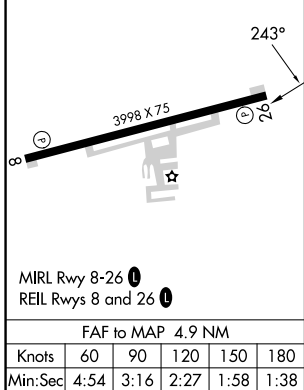
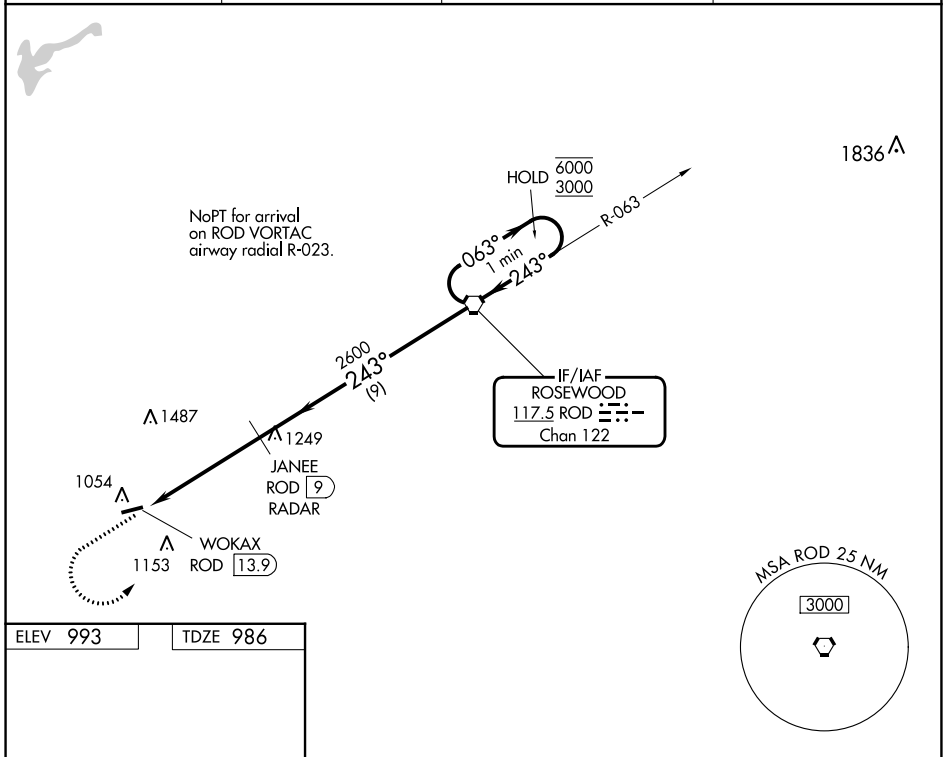


VORTAC ROD 117.5 Chan 122	APP CRS 243°	Rwy Idg TDZE Aprt Elev	3998 986 993
---	------------------------	------------------------------	---

VOR RWY 26

PIQUA/HARTZELL FLD (I17)

DME or RADAR required.		MISSED APPROACH: Climb to 3000 then left turn direct ROD VORTAC and hold.	
▼ Rwy 26 helicopter visibility reduction below 3/4 SM NA. ▲ NA Use James M Cox Dayton Intl altimeter setting.		DAY ASOS 125.8	VES AWOS-3T 125.9
		COLUMBUS APP CON 134.45 294.5 352.05	UNICOM 123.0 (CTAF) 0



CATEGORY	A	B	C	D
	5-26	1500-1 514 (600-1)	1500-1 3/8 514 (600-1 3/8)	
☑ CIRCLING	1500-1 507 (600-1)	1560-1 567 (600-1)	1560-1 1/2 567 (600-1 1/2)	1880-3 887 (900-3)

EC-2, 26 DEC 2024 to 23 JAN 2025

EC-2, 26 DEC 2024 to 23 JAN 2025