

CTRUS FOUR DEPARTURE (RNAV)  
(CTRUS4, CTRUS) 10SEP20

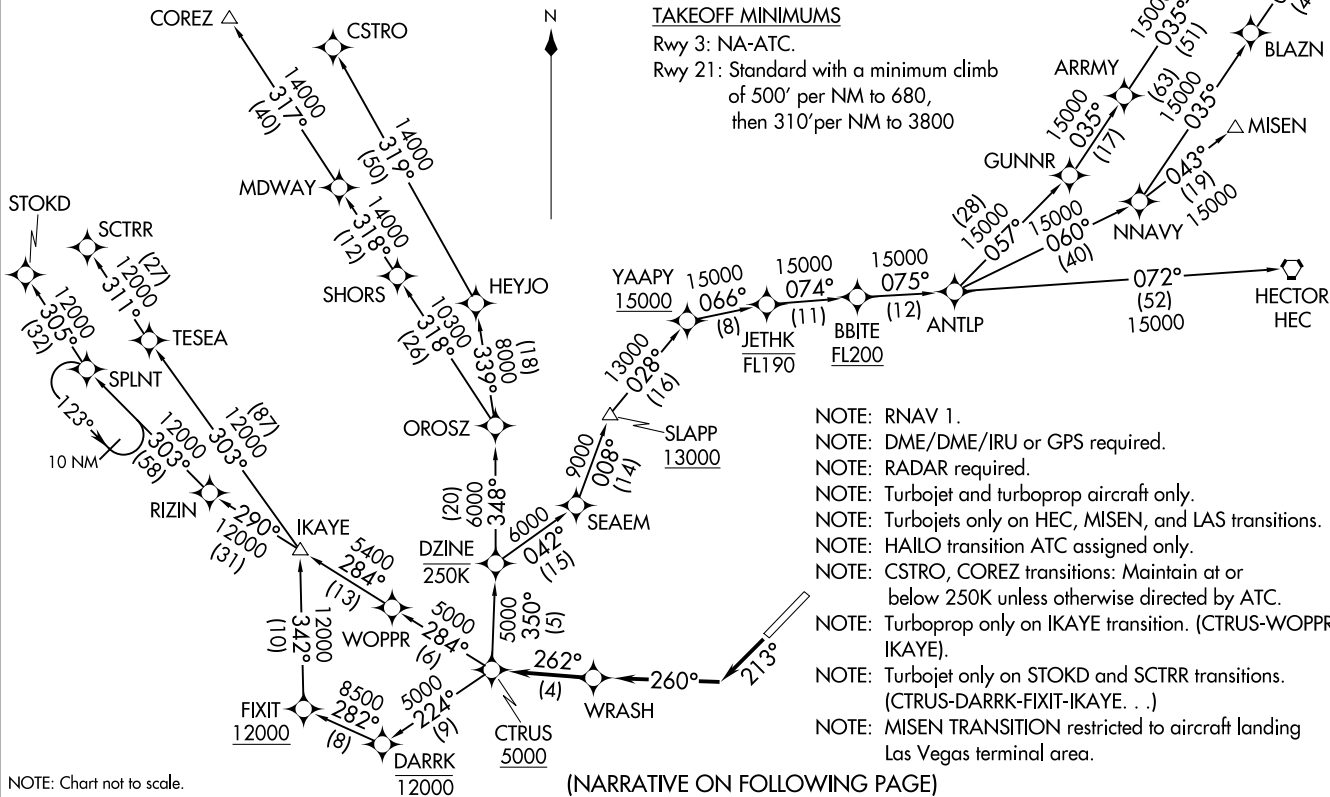
ATIS  
119.15  
SANTA MONICA TOWER\*  
120.1 257.8  
SOCAL DEP CON  
125.2 323.275

**TOP ALTITUDE:  
IKAYE TRANSITION: AS ASSIGNED BY ATC;  
ALL OTHER TRANSITIONS: FL230**

TAKEOFF MINIMUMS

Rwy 3: NA-ATC.

Rwy 21: Standard with a minimum climb  
of 500' per NM to 680,  
then 310' per NM to 3800



- NOTE: RNAV 1.
- NOTE: DME/DME/IRU or GPS required.
- NOTE: RADAR required.
- NOTE: Turbojet and turboprop aircraft only.
- NOTE: Turbojets only on HEC, MISEN, and LAS transitions.
- NOTE: HAILLO transition ATC assigned only.
- NOTE: CSTRO, COREZ transitions: Maintain at or below 250K unless otherwise directed by ATC.
- NOTE: Turboprop only on IKAYE transition. (CTRUS-WOPPR- IKAYE).
- NOTE: Turbojet only on STOKD and SCTRR transitions. (CTRUS-DARRK-FIXIT- IKAYE. . .)
- NOTE: MISEN TRANSITION restricted to aircraft landing Las Vegas terminal area.

(NARRATIVE ON FOLLOWING PAGE)

NOTE: Chart not to scale.

SANTA MONICA, CALIFORNIA  
SANTA MONICA MUNI (SMT0)

CTRUS FOUR DEPARTURE (RNAV)  
20254

AI-5023 (FAA)

SANTA MONICA MUNI (SMT0)  
SANTA MONICA, CALIFORNIA



DEPARTURE ROUTE DESCRIPTION

TAKEOFF RUNWAY 21: Climb on heading 213° to intercept course 260° to WRASH, then on track 262° to cross CTRUS at or above 5000, thence . . . .

. . . . on assigned transition, IKAYE transition maintain altitude as assigned by ATC, all other transitions maintain FL230. Expect filed altitude 10 minutes after departure.

COREZ TRANSITION (CTRUS4.COREZ)

CSTRO TRANSITION (CTRUS4.CSTRO)

HAILO TRANSITION (CTRUS4.HAILO)

HECTOR TRANSITION (CTRUS4.HEC)

IKAYE TRANSITION (CTRUS4.IKAYE)

LAS VEGAS TRANSITION (CTRUS4.LAS)

MISEN TRANSITION (CTRUS4.MISEN)

SCTRR TRANSITION (CTRUS4.SCTRR)

STOKD TRANSITION (CTRUS4.STOKD)

SW-3, 26 DEC 2024 to 23 JAN 2025

SW-3, 26 DEC 2024 to 23 JAN 2025