

WAAS CH <b>50339</b> <b>W03A</b>	APP CRS <b>051°</b>	Rwy Idg TDZE <b>164</b> Apt Elev <b>170</b>	<b>3500</b>
--	------------------------	---	-------------

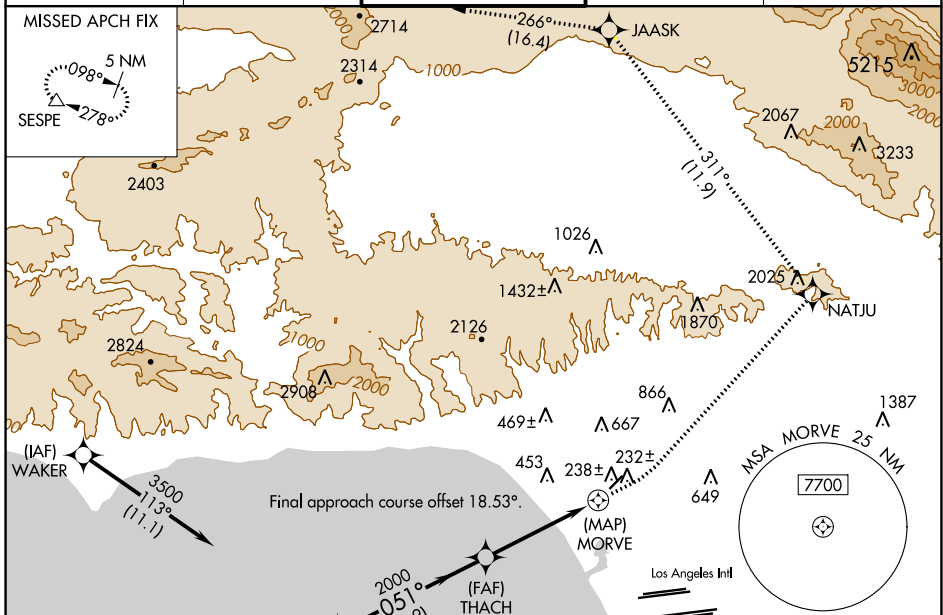
# RNAV (GPS) Y RWY 3

SANTA MONICA MUNI (SMO)

RNP APCH.  
 ▼ MISSED APCH FIX  
 ▲ Rwy 3 helicopter visibility reduction below ¾ SM NA.

MISSED APPROACH: Climb to 600 then climbing left turn to 5500 direct NATJU and track 311° to JAASK and track 266° to SESPE and hold.  
 \* Missed approach requires minimum climb of 300 feet per NM to 2400.

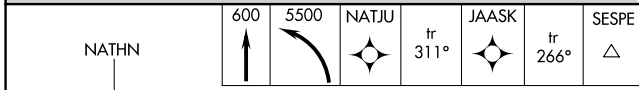
ATIS <b>119.15</b>	SOCAL APP CON <b>135.05 317.5</b>	SANTA MONICA TOWER * <b>120.1 (CTAF) 257.8</b>	GND CON <b>121.9</b>	UNICOM <b>122.95</b>
-----------------------	--------------------------------------	---	-------------------------	-------------------------



SW-3, 26 DEC 2024 to 23 JAN 2025

SW-3, 26 DEC 2024 to 23 JAN 2025

ELEV 170	TDZE 164
----------	----------



600	5500	NATJU	tr 311°	JAASK	tr 266°	SESPE
Visual Segment - Obstacles.						
5.9 NM		4.5 NM		0.6 NM		

CATEGORY	A	B	C	D
LP MDA*	460-1 296 (300-1)			
LP MDA	920-1 756 (800-1)	920-1¼ 756 (800-1¼)	920-2½	756 (800-2½)
LNAV MDA*	500-1 336 (400-1)	500-1¼ 336 (400-1¼)	500-2½	336 (400-2½)
LNAV MDA	1020-1 856 (900-1)	1020-1¼ 856 (900-1¼)	1020-2½	856 (900-2½)

